

## KRT15 monoclonal antibody

Catalog: MB21270

Host: Mouse

Reactivity: Human

### BackGround:

The protein encoded by this gene is a member of the keratin gene family. The keratins are intermediate filament proteins responsible for the structural integrity of epithelial cells and are subdivided into cytokeratins and hair keratins. Keratin 15 is a type I keratin without a defined type II partner. Keratin 15 is expressed primarily in the basal keratinocytes of stratified tissues, including the fetal epidermis and fetal nail. Expression of keratin 15 is downregulated in some hyperproliferating situations, such as psoriasis and hypertrophic scars. Because keratinocytes in psoriasis and hypertrophic scars are activated, it is suggested that keratin 15 expression is not compatible with keratinocyte activation and the keratin 15 gene is downregulated to maintain the activated phenotype.

### Product:

Purified antibody in PBS with 0.05% sodium azide.

### Molecular Weight:

49kDa

### Swiss-Prot:

P19012

### Purification&Purity:

The antibody was affinity-purified from mouse ascites by affinity-chromatography using epitope-specific immunogen and the purity is > 95% (by SDS-PAGE).

### Applications:

IHC:1/200 - 1/1000 IF:1/200 - 1/1000 FC:1/200 - 1/400

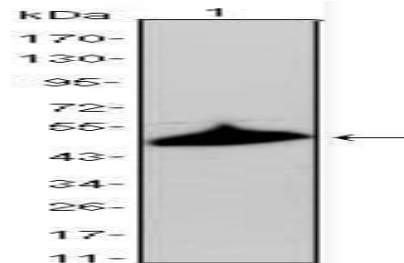
### Storage&Stability:

Store at 4 °C short term. Aliquot and store at -20 °C long term. Avoid freeze-thaw cycles.

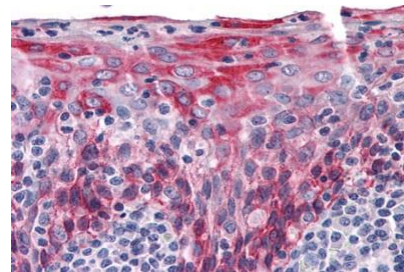
### Isotype:

Mouse IgG2a

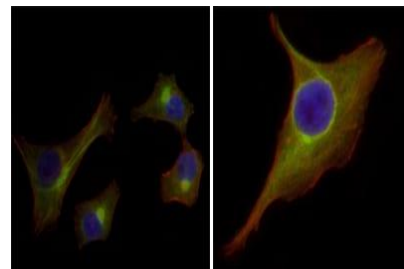
### DATA:



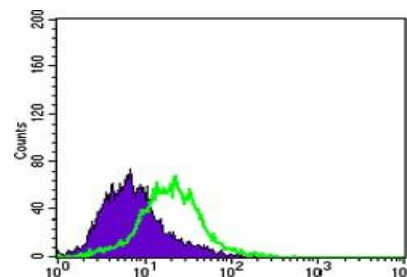
Western blot analysis using KRT15 mouse mAb against A431 cell lysate.



Immunohistochemical analysis of paraffin-embedded human Tonsil tissues using KRT15 mouse mAb



Immunofluorescence analysis of HepG2(left) and PACN-1 (right) cells using KRT15 mouse mAb (green). Red: Actin filaments have been labeled with DY-554 phalloidin. Blue: DRAQ5 fluorescent DNA dye.



Flow cytometric analysis of PACN-1 cells using KRT15 mouse mAb

### Bioworld Technology, Inc.

Add: 1660 South Highway 100, Suite 500 St. Louis Park, MN 55416, USA.

Email: [info@bioworld.com](mailto:info@bioworld.com)

Tel: 6123263284

Fax: 6122933841

### Bioworld technology, co. Ltd.

Add: No 9, weidi road Qixia District Nanjing, 210046, P. R. China.

Email: [info@biogot.com](mailto:info@biogot.com)

Tel: 0086-025-68037686

Fax: 0086-025-68035151



## PRODUCT DATA SHEET

Bioworld Technology, Inc.

---

(green) and negative control (purple).

For research use only, not for use in diagnostic procedure.

Note:

---

### Bioworld Technology, Inc.

Add: 1660 South Highway 100, Suite 500 St. Louis Park,  
MN 55416, USA.

Email: [info@bioworld.com](mailto:info@bioworld.com)

Tel: 6123263284

Fax: 6122933841

### Bioworld technology, co. Ltd.

Add: No 9, weidi road Qixia District Nanjing, 210046,  
P. R. China.

Email: [info@biogot.com](mailto:info@biogot.com)

Tel: 0086-025-68037686

Fax: 0086-025-68035151