

REG1A monoclonal antibody

Catalog: MB21233

Host: Mouse

Reactivity: Human

BackGround:

REG1A (regenerating islet-derived 1 alpha), also known as PTP, PSP, is a member of the Reg family of secreted proteins with a C-type lectin domain. REG1A is associated with islet cell regeneration and diabetogenesis and may be involved in pancreatic lithogenesis. Due to variable glycosylation, pancreatic REG1A exists as multiple species of 16 - 18 kDa. REG1A promotes the maintenance and growth of pancreatic islet

Product:

Purified antibody in PBS with 0.05% sodium azide.

Molecular Weight:

19kDa

Swiss-Prot:**Purification&Purity:**

The antibody was affinity-purified from mouse ascites by affinity-chromatography using epitope-specific immunogen and the purity is > 95% (by SDS-PAGE).

Applications:

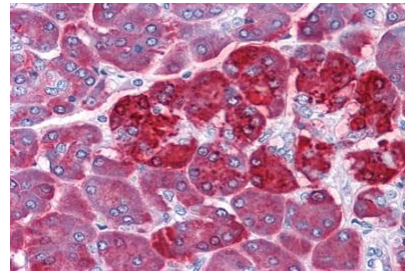
IHC: 1/200 - 1/1000 IF: 1/200 - 1/1000

Storage&Stability:

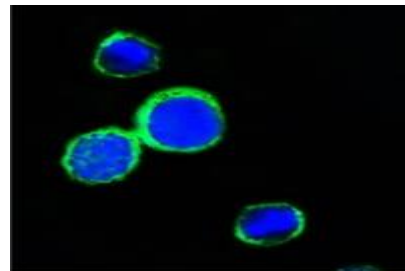
Store at 4 °C short term. Aliquot and store at -20 °C long term. Avoid freeze-thaw cycles.

Isotype:

Mouse IgG1

DATA:

Immunohistochemical analysis of paraffin-embedded human Pancreas tissues using REG1A mouse mAb



Confocal Immunofluorescence analysis of PC12 cells using REG1A mouse mAb (green). Blue: DRAQ5 fluorescent DNA dye.

Note:

For research use only, not for use in diagnostic procedure.

Bioworld Technology, Inc.

Add: 1660 South Highway 100, Suite 500 St. Louis Park, MN 55416, USA.

Email: info@bioworld.com

Tel: 6123263284

Fax: 6122933841

Bioworld technology, co. Ltd.

Add: No 9, weidi road Qixia District Nanjing, 210046, P. R. China.

Email: info@biogot.com

Tel: 0086-025-68037686

Fax: 0086-025-68035151