

PRODUCT DATA SHEET



Bioworld Technology, Inc.

CD28 Recombinant Protein

Catalog: NCP0474

Host: E.coli

Tag: His-tag

BackGround:

Members of the Toll-like receptor (TLR) family, named for the closely related Toll receptor in *Drosophila*, play a pivotal role in innate immune responses. TLRs recognize conserved motifs found in various pathogens and mediate defense responses. Triggering of the TLR pathway leads to the activation of NF- κ B and subsequent regulation of immune and inflammatory genes. The TLRs and members of the IL-1 receptor family share a conserved stretch of approximately 200 amino acids known as the Toll/Interleukin-1 receptor (TIR) domain. Upon activation, TLRs associate with a number of cytoplasmic adaptor proteins containing TIR domains, including myeloid differentiation factor 88 (MyD88), MyD88-adaptor-like/TIR-associated protein (MAL/TIRAP), Toll-receptor-associated activator of interferon (TRIF), and Toll-receptor-associated molecule (TRAM). This association leads to the recruitment and activation of IRAK1 and IRAK4, which form a complex with TRAF6 to activate TAK1 and IKK. Activation of IKK leads to the degradation of I κ B, which normally maintains NF- κ B in an inactive state by sequestering it in the cytoplasm.

TLR8 is an intracellular TLR localized to the endoplasmic reticulum, endosomes, lysosomes, and endolysosomes. It is activated by single-stranded viral RNA, as well as synthetic imidazoquinoline compounds including R-848. TLR8 expression is highest in the lung and in myeloid cells. In addition, expression is upregulated by IFN- γ in monocyte-like leukemic THP-1 cells that have been differentiated with TPA.

Product:

4M Urea, PH7.4

Molecular Weight:

~88kDa

Swiss-Prot:

Q9NR97

Purification&Purity:

Transferred into competent cells and the supernatant was purified by NI column affinity chromatography and the purity is > 85% (by SDS-PAGE).

Restriction Sites:

NdeI-XhoI

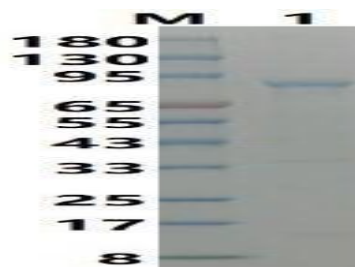
Storage&Stability:

Store at 4 °C short term. Aliquot and store at -20 °C long term. Avoid freeze-thaw cycles.

Expression Vector:

pet-22b(+)

DATA:



Note:

For research use only, not for use in diagnostic procedure.

Bioworld Technology, Inc.

Add: 1660 South Highway 100, Suite 500 St. Louis Park, MN 55416, USA.

Email: info@bioworld.com

Tel: 6123263284

Fax: 6122933841

Bioworld technology, co. Ltd.

Add: No 9, weidi road Qixia District Nanjing, 210046, P. R. China.

Email: info@biogot.com

Tel: 0086-025-68037686

Fax: 0086-025-68035151