

CD162 Recombinant Protein

Catalog: NCP0286

Host: E.coli

Tag: His-tag

BackGround:

PSGL-1 (P-Selectin glycoprotein ligand, also designated CD162), exists as a disulfide-linked homodimer. PSGL-1 is a type 1 membrane protein that localizes on the tips of microvilli of leukocytes. Its extracellular domain is rich in serines, threonines and prolines, and includes a series of 15 and 16 ecameric repeats in HL-60 and U-937 cells, and human leukocytes, respectively. Although PSGL-1 appears to be the sole receptor for P-Selectin on human hematopoietic cells, it also interacts with E-Selectin through a unique binding site. In order to bind PSGL-1 to either E-Selectin or P-Selectin, PSGL-1 must be sialylated and fucosylated. PSLG-1 is a mucin-like molecule, much like leukosialin (CD43), CD164 and CD34. These proteins belong to an emerging family of cell adhesion receptors called sialomucins, which transduce negative signals in hematopoietic cells.

Product:

PBS, 4M Urea, PH7.4

Molecular Weight:

~53kDa

Swiss-Prot:

Q14242

Purification&Purity:

Transferred into competent cells and the supernatant was purified by NI column affinity chromatography and the purity is > 85% (by SDS-PAGE).

Restriction Sites:

NdeI-XhoI

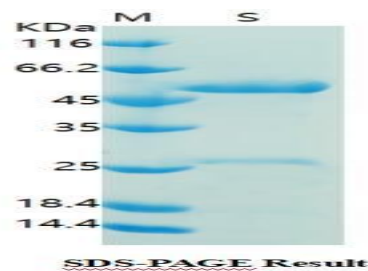
Storage&Stability:

Store at 4 °C short term. Aliquot and store at -20 °C long term. Avoid freeze-thaw cycles.

Expression Vector:

pet-22b(+)

DATA:



Note:

For research use only, not for use in diagnostic procedure.

Bioworld Technology, Inc.

Add: 1660 South Highway 100, Suite 500 St. Louis Park,
MN 55416, USA.

Email: info@bioworld.com

Tel: 6123263284

Fax: 6122933841

Bioworld technology, co. Ltd.

Add: No 9, weidi road Qixia District Nanjing, 210046,
P. R. China.

Email: info@biogot.com

Tel: 0086-025-68037686

Fax: 0086-025-68035151