

ACE2-hFc fusion protein

Catalog: NCP0090

Host: Human

Source: 293F

BackGround:

Angiotensin-converting enzyme 2 (ACE2) is also known as ACEH (ACE homolog), is an integral membrane protein with considerable homologous to ACE, which belongs to the peptidase M2 family. ACE2 is an exopeptidase that catalyses the conversion of angiotensin I to the nonapeptide angiotensin, or the conversion of angiotensin II to angiotensin 1-7. ACE2 may be an important regulator of heart function. In case of human coronaviruses SARS and HCoV-NL63 infections, ACE-2 serve as functional receptor for the spike glycoprotein of both coronaviruses. ACE2 is activated by chloride and fluoride, but not bromide and Inhibited by MLN-4760, cFP_Leu, and EDTA, but not by the ACE inhibitors lisinopril, captopril and enalaprilat. ACE2 is active from pH 6 to 9, and the optimum pH is 6.5 in the presence of 1 M NaCl.

Product:

PBS, pH7.4

Size:

100ug/1mg

Swiss-Prot:

Q9BYF1-1

Purification&Purity:

The protein was purified from 293F and the purity is > 95% (by SDS-PAGE).

Molecular Weight:

The protein has a calculated MW of 111.7 kDa. The protein migrates as 125-150 kDa under reducing (R) condition (SDS-PAGE) due to glycosylation.

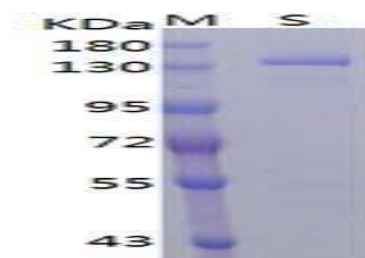
Storage&Stability:

Store at 4 °C short term. Aliquot and store at -20 °C long term. Avoid freeze-thaw cycles.

Protein length:

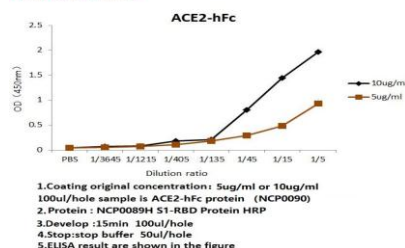
AA Gln 18 - Ser 740 (Accession # Q9BYF1-1)

DATA:



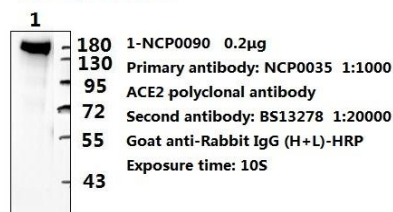
Biotinylated ACE2-hFc, Avitag on SDS-PAGE under reducing (R) condition. The gel was stained overnight with Coomassie Blue. The purity of the protein is greater than 95%.

ELISA experiment



ELISA activity detection

WB experiment



Note:

For research use only, not for use in diagnostic procedure.

Bioworld Technology, Inc.

Add: 1660 South Highway 100, Suite 500 St. Louis Park, MN 55416, USA.

Email: info@bioworld.com

Tel: 6123263284

Fax: 6122933841

Bioworld technology, co. Ltd.

Add: No 9, weidi road Qixia District Nanjing, 210046, P. R. China.

Email: info@biogot.com

Tel: 0086-025-68037686

Fax: 0086-025-68035151