

Topoisomerase 1 Rabbit monoclonal antibody

Catalog: MB66395

Host: Rabbit

Reactivity: Human, Mouse, Rat

BackGround:

Releases the supercoiling and torsional tension of DNA introduced during the DNA replication and transcription by transiently cleaving and rejoining one strand of the DNA duplex. Introduces a single-strand break via transesterification at a target site in duplex DNA. The scissile phosphodiester is attacked by the catalytic tyrosine of the enzyme, resulting in the formation of a DNA-(3'-phosphotyrosyl)-enzyme intermediate and the expulsion of a 5'-OH DNA strand. The free DNA strand then rotates around the intact phosphodiester bond on the opposing strand, thus removing DNA supercoils. Finally, in the religation step, the DNA 5'-OH attacks the covalent intermediate to expel the active-site tyrosine and restore the DNA phosphodiester backbone. Regulates the alternative splicing of tissue factor (F3) pre-mRNA in endothelial cells. Involved in the circadian transcription of the core circadian clock component ARNTL/BMAL1 by altering the chromatin structure around the ROR response elements (RORes) on the ARNTL/BMAL1 promoter.

Product:

Rabbit IgG, 1mg/ml in PBS with 0.02% sodium azide, 50% glycerol, pH7.2

Molecular Weight:

~ 91 kDa

Swiss-Prot:

P11387

Purification&Purity:

The antibody was affinity-purified from cell culture supernatant by protein A+G and the purity is > 95% (by SDS-PAGE).

Applications:

WB (1/2000 - 1/20000), IHC-P (1/100 - 1/200), IF/ICC (1/200 - 1/500)

Storage&Stability:

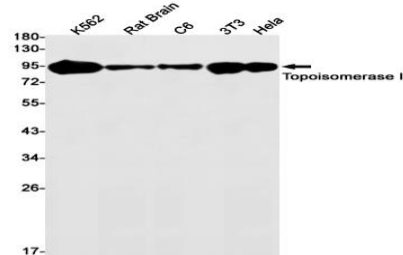
Store at 4 °C short term. Aliquot and store at -20 °C long

term. Avoid freeze-thaw cycles.

Specificity:

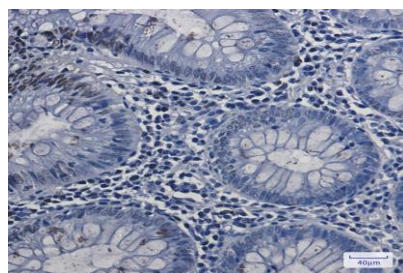
Topoisomerase 1 mAb detects endogenous levels of Topoisomerase 1 protein.

DATA:

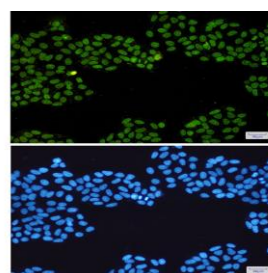


Western blot detection of Topoisomerase I in K562, Rat

Brain, C6, 3T3, HeLa cell lysates using Topoisomerase I antibody (1:1000 diluted).



Immunohistochemical analysis of paraffin-embedded human colon cancer using Topoisomerase 1 antibody.



Immunofluorescent analysis of HeLa cells using Topoisomerase 1 antibody (green), and DAPI (blue).

Note:

For research use only, not for use in diagnostic procedure.

Bioworld Technology, Inc.

Add: 1660 South Highway 100, Suite 500 St. Louis Park, MN 55416, USA.

Email: info@bioworld.com

Tel: 6123263284

Fax: 6122933841

Bioworld technology, co. Ltd.

Add: No 9, weidi road Qixia District Nanjing, 210046, P. R. China.

Email: info@biogot.com

Tel: 0086-025-68037686

Fax: 0086-025-68035151



PRODUCT DATA SHEET

Bioworld Technology, Inc.

Bioworld Technology, Inc.

Add: 1660 South Highway 100, Suite 500 St. Louis Park,
MN 55416, USA.

Email: info@bioworld.com

Tel: 6123263284

Fax: 6122933841

Bioworld technology, co. Ltd.

Add: No 9, weidi road Qixia District Nanjing, 210046,
P. R. China.

Email: info@biogot.com

Tel: 0086-025-68037686

Fax: 0086-025-68035151