

mCherry-Tag Mouse monoclonal antibody

Catalog: MB2013

Host: Mouse

Reactivity: All

BackGround:

MCherry is a fluorophore (a fluorescent molecule) used in biotechnology as a tracer to follow the flow of fluids, as a marker when tagged to molecules and cells components. mCherry is a monomeric fluorescent construct which absorbs at 587 nm and emits at 610 nm. It is resistant to photobleaching and is stable. It matures quickly, with a $t_{0.5}$ of 15 minutes, allowing it to be visualised soon after translation.

Product:

Mouse IgG1 in phosphate buffered saline , pH 7.4, 150mM NaCl, 0.02% sodium azide and 50% glycerol. Store at -20 °C. Stable for 12 months from date of receipt

Molecular Weight:

N/A

Swiss-Prot:

N/A

Purification&Purity:

Affinity-chromatography

Applications:

WB: 1:5000~1:10000

IHC: 1:200

IF: 1:200

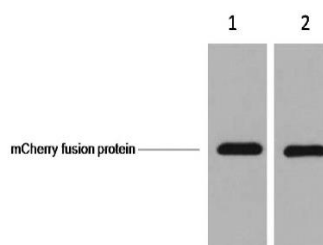
Storage&Stability:

Store at 4 °C short term. Aliquot and store at -20 °C long term. Avoid freeze-thaw cycles.

Specificity:

mCherry-Tag mouse monoclonal antibody detects endogenous levels of internal, C-terminal, and N-terminal mCherry -tagged recombinant proteins.

DATA:



1ug mCherry fusion protein+ Primary antibody dilution at

1.1:5000

2.1:10000

Note:

For research use only, not for use in diagnostic procedure.

Bioworld Technology, Inc.

Add: 1660 South Highway 100, Suite 500 St. Louis Park, MN 55416, USA.

Email: info@bioworld.com

Tel: 6123263284

Fax: 6122933841

Bioworld technology, co. Ltd.

Add: No 9, weidi road Qixia District Nanjing, 210046, P. R. China.

Email: info@biogot.com

Tel: 0086-025-68037686

Fax: 0086-025-68035151