

HSV-Tag Mouse monoclonal antibody

Catalog: MB2010

Host: Mouse

Reactivity: All

BackGround:

HSV-Tag is an epitope tag composed of a 11 residue peptide (QPELAPEDPED) derived from the HSV glycoprotein D. This antibody can be used to check HSV- tagged fusion proteins. The recombinant protein over-expression systems with well-known epitope tags are powerful strategies in checking and purifying the interest proteins, which are expressed in certain vectors containing the particular tagged fragments. The small tags are used to be cloned along with the target proteins, and the antibodies against those fusion-tags are used to monitor fusion protein expression and purification.

Product:

Mouse IgG1 in phosphate buffered saline , pH 7.4, 150mM NaCl, 0.02% sodium azide and 50% glycerol. Store at -20 °C. Stable for 12 months from date of receipt

Molecular Weight:

N/A

Swiss-Prot:

N/A

Purification&Purity:

Affinity-chromatography

Applications:

WB: 1:5000~1:10000

IF: 1:200

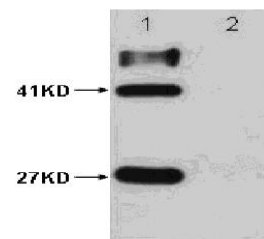
Storage&Stability:

Store at 4 °C short term. Aliquot and store at -20 °C long term. Avoid freeze-thaw cycles.

Specificity:

HSV-tag mouse monoclonal antibody detects endogenous levels of internal, C-terminal, and N-terminal HSV -tagged proteins.

DATA:



HSV-Tag Mouse Monoclonal antibody Lane 1: GST- HSV fusion protein (27KD); MBP- HSV 2 fusion protein (41KD) Lane 2: GST protein; MBP protein

Note:

For research use only, not for use in diagnostic procedure.

Bioworld Technology, Inc.

Add: 1660 South Highway 100, Suite 500 St. Louis Park, MN 55416, USA.

Email: info@bioworld.com

Tel: 6123263284

Fax: 6122933841

Bioworld technology, co. Ltd.

Add: No 9, weidi road Qixia District Nanjing, 210046, P. R. China.

Email: info@biogot.com

Tel: 0086-025-68037686

Fax: 0086-025-68035151