

Eg5 / KIF11 monoclonal antibody

Catalog: MB0012

Host: Mouse

Reactivity: Human

BackGround:

Eg5 (also known as Kinesin-like protein KIF11 or TRIP5) is a slow, plus-end-directed microtubule-based motor of the BimC kinesin family that is essential for bipolar spindle formation during eukaryotic cell division. When the expression of Eg5 is blocked, centrosome migration halts and cells are arrested in mitosis with monoastal microtubule arrays. Eg5 is phosphorylated on serine during S phase and on both serine and Thr 927 during mitosis, which regulates the association of Eg5 with the spindle apparatus (probably during early prophase). Eg5 is also known to be a member of the thyroid receptor interacting protein (TRIP) family, and interacts with the thyroid hormone receptor only in the presence of thyroid hormone.

Product:

Purified mouse monoclonal in buffer containing 0.1M Tris-Glycine (pH 7.4, 150 mM NaCl) with 0.2% sodium azide, 50% glycerol

Molecular Weight:

Predicted band size: 120KDa

Observed band size: 130KDa

Additional band size: 75K

Swiss-Prot:

P52732

Purification&Purity:

The antibody was affinity-purified from mouse ascites by affinity-chromatography using epitope-specific immuno-gen and the purity is > 95% (by SDS-PAGE).

Applications:

WB: 1:1000

ICC: 1:200

IP: 1:50~1:200

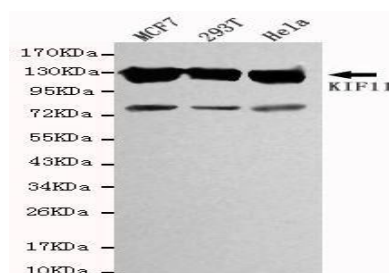
Storage&Stability:

Store at 4 °C short term. Aliquot and store at -20 °C long term. Avoid freeze-thaw cycles.

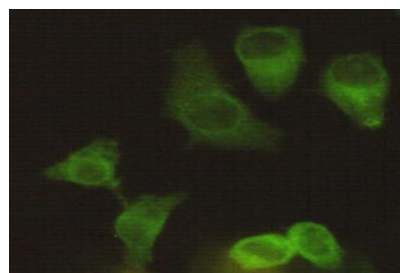
Specificity:

This antibody detects endogenous levels of KIF11 and does not cross-react with related proteins

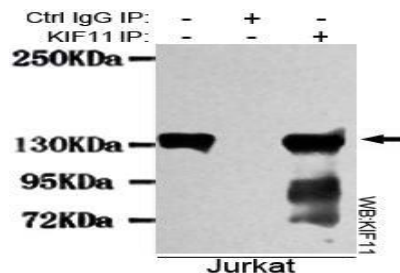
DATA:



Western blot detection of KIF11 in MCF7, 293T&HeLa cell lysates using KIF11 antibody (1:1000 diluted).



Immunocytochemistry stain of HeLa using KIF11 antibody (1:200).



Immunoprecipitation analysis of Jurkat cell lysates using KIF11 antibody

Note:

For research use only, not for use in diagnostic procedure.

Bioworld Technology, Inc.

Add: 1660 South Highway 100, Suite 500 St. Louis Park, MN 55416, USA.

Email: info@bioworld.com

Tel: 6123263284

Fax: 6122933841

Bioworld technology, co. Ltd.

Add: No 9, weidi road Qixia District Nanjing, 210046, P. R. China.

Email: info@biogot.com

Tel: 0086-025-68037686

Fax: 0086-025-68035151



PRODUCT DATA SHEET

Bioworld Technology, Inc.

Bioworld Technology, Inc.

Add: 1660 South Highway 100, Suite 500 St. Louis Park,
MN 55416, USA.

Email: info@bioworld.com

Tel: 6123263284

Fax: 6122933841

Bioworld technology, co. Ltd.

Add: No 9, weidi road Qixia District Nanjing, 210046,
P. R. China.

Email: info@biogot.com

Tel: 0086-025-68037686

Fax: 0086-025-68035151