

RalBP1 polyclonal antibody

Catalog: CAS7517

Host: Rabbit

Reactivity: Human,Rat,Mouse

BackGround:

The RalA binding protein 1 (RalBP1 or RLIP76) was originally identified as a GTP-RalA associated protein that acted as a downstream RalA effector in regulating Ral-Ras signaling. RalBP1 interacts with RalA and the endocytosis protein REPS2 (POB1) through its carboxy-terminal Ral binding domain. RalBP1 has an intrinsic GTPase activating function and interacts with Cdc42 through its centrally located Rho-GAP domain. A protein complex containing RalBP1/POB1/RalA regulates endocytosis of membrane receptors. RalBP1 also functions as a non-ABC transporter that catalyzes the ATP-dependent transport of numerous xenobiotics, including glutathione conjugates and some chemotherapeutic agents. RalBP1 transporter activity may play an important role in detoxification, drug resistance and the stress response. Increased expression of RalBP1 protein is associated with some forms of cancer and regression of cancer xenografts results from RalBP1 inhibition. Evidence to date suggests that RalBP1 may be a promising therapeutic target for cancer therapy.

Product:

Rabbit IgG, 1mg/ml in PBS with 0.02% sodium azide, 50% glycerol, pH7.2.

Molecular Weight:

~ 100 kDa

Swiss-Prot:

Q15311

Purification&Purity:

The antibody was affinity-purified from rabbit antiserum by affinity-chromatography using epitope-specific immunogen and the purity is > 96% (by SDS-PAGE).

Applications:

WB: 1:5000~1:10000

IP:1:2000~1:8000

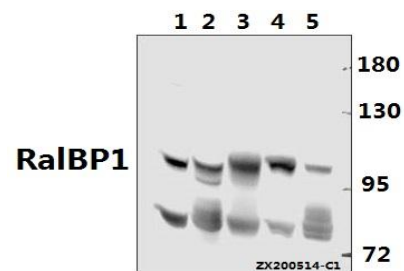
Storage&Stability:

Store at 4 °C short term. Aliquot and store at -20 °C long term. Avoid freeze-thaw cycles.

Specificity:

RalBP1 polyclonal antibody detects endogenous levels of RalBP1 protein.

DATA:



Western blot (WB) analysis of RalBP1 polyclonal antibody at 1:5000 dilution

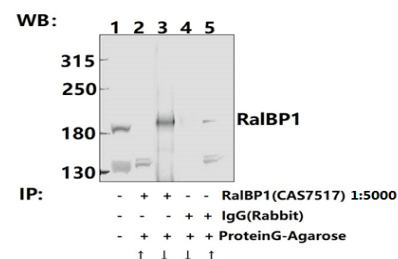
Lane1:CT26 whole cell lysate(40ug)

Lane2:PC12 whole cell lysate(40ug)

Lane3:Jurkat whole cell lysate(40ug)

Lane4:HCT116 whole cell lysate(40ug)

Lane5:HEK293T whole cell lysate(40ug)



Immunoprecipitation - RalBP1 Polyclonal Antibody

Note:

For research use only, not for use in diagnostic procedure.

Bioworld Technology, Inc.

Add: 1660 South Highway 100, Suite 500 St. Louis Park, MN 55416, USA.

Email: info@bioworld.com

Tel: 6123263284

Fax: 6122933841

Bioworld technology, co. Ltd.

Add: No 9, weidi road Qixia District Nanjing, 210046, P. R. China.

Email: info@biogot.com

Tel: 0086-025-68037686

Fax: 0086-025-68035151



PRODUCT DATA SHEET

Bioworld Technology, Inc.

Bioworld Technology, Inc.

Add: 1660 South Highway 100, Suite 500 St. Louis Park,
MN 55416, USA.

Email: info@bioworld.com

Tel: 6123263284

Fax: 6122933841

Bioworld technology, co. Ltd.

Add: No 9, weidi road Qixia District Nanjing, 210046,
P. R. China.

Email: info@biogot.com

Tel: 0086-025-68037686

Fax: 0086-025-68035151