

Endonuclease G polyclonal antibody

Catalog: CAS75127

Host: Rabbit

Reactivity: Human,Rat,Mouse

BackGround:

Endonuclease G (EndoG) is a nuclear-encoded mitochondrial nuclease that has been reported to function in apoptosis, DNA recombination and cell proliferation. EndoG is expressed as a precursor protein containing an amino-terminal mitochondrial targeting sequence which is removed when the protein is imported into the mitochondria. During apoptosis EndoG is released from the mitochondria, translocates to the nucleus and cooperates with other nucleases to trigger DNA fragmentation associated with the apoptotic process

Product:

Rabbit IgG, 1mg/ml in PBS with 0.02% sodium azide, 50% glycerol, pH7.4.

Molecular Weight:

~ 30 kDa

Swiss-Prot:

Q14249

Purification&Purity:

The antibody was affinity-purified from rabbit antiserum by affinity-chromatography using epitope-specific immunogen and the purity is > 95% (by SDS-PAGE).

Applications:

WB: 1:2000~1:5000

IP:1:2000~8000

IHC:1:50~1:100

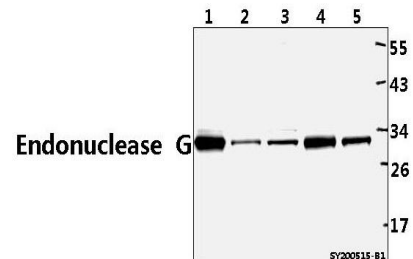
Storage&Stability:

Store at 4 °C short term. Aliquot and store at -20 °C long term. Avoid freeze-thaw cycles.

Specificity:

Endonuclease G polyclonal antibody detects endogenous levels of Endonuclease G protein.

DATA:



Western blot (WB) analysis of Endonuclease G polyclonal antibody at 1:5000 dilution

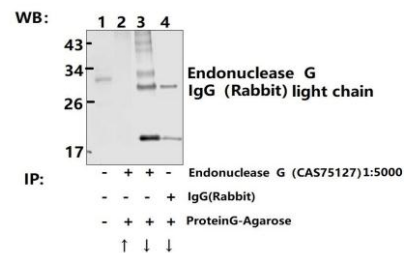
Lane1:K562 whole cell lysate(40ug)

Lane2:U-87MG whole cell lysate(40ug)

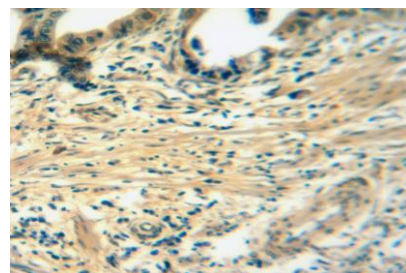
Lane3:HepG2 whole cell lysate(40ug)

Lane4:The Heart tissue lysate of Mouse(40ug)

Lane5:The Muscle tissue lysate of RAT(40ug)



Immunoprecipitation - Endonuclease G Polyclonal Antibody



Immunohistochemistry of paraffin-embedded human colon carcinoma using Endonuclease G antibody at dilution of 1:50.

Bioworld Technology, Inc.

Add: 1660 South Highway 100, Suite 500 St. Louis Park, MN 55416, USA.

Email: info@bioworld.com

Tel: 6123263284

Fax: 6122933841

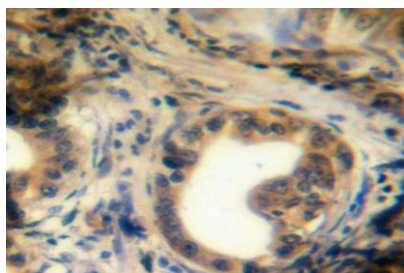
Bioworld technology, co. Ltd.

Add: No 9, weidi road Qixia District Nanjing, 210046, P. R. China.

Email: info@biogot.com

Tel: 0086-025-68037686

Fax: 0086-025-68035151



Immunohistochemistry of paraffin-embedded human colon carcinoma using Endonuclease G antibody at dilution of 1:50.

Note:

For research use only, not for use in diagnostic procedure.

Bioworld Technology, Inc.

Add: 1660 South Highway 100, Suite 500 St. Louis Park, MN 55416, USA.

Email: info@bioworld.com

Tel: 6123263284

Fax: 6122933841

Bioworld technology, co. Ltd.

Add: No 9, weidi road Qixia District Nanjing, 210046, P. R. China.

Email: info@biogot.com

Tel: 0086-025-68037686

Fax: 0086-025-68035151