

Cytochrome c polyclonal antibody

Catalog: CAS75125

Host: Rabbit

Reactivity: Human,Rat,Mouse

BackGround:

Cytochrome c is a well conserved electron-transport protein and is part of the respiratory chain localized to mitochondrial intermembrane space. Upon apoptotic stimulation, cytochrome c released from mitochondria associates with procaspase-9 (47 kDa)/Apaf 1. This complex processes caspase-9 from inactive proenzyme to its active form. This event further triggers caspase-3 activation and eventually leads to apoptosis.

Product:

Rabbit IgG, 1mg/ml in PBS with 0.02% sodium azide, 50% glycerol, pH7.4.

Molecular Weight:

~ 17 kDa

Swiss-Prot:

P99999

Purification&Purity:

The antibody was affinity-purified from rabbit antiserum by affinity-chromatography using epitope-specific immunogen and the purity is > 95% (by SDS-PAGE).

Applications:

WB: 1:2000~1:5000

IHC:1:50~1:100

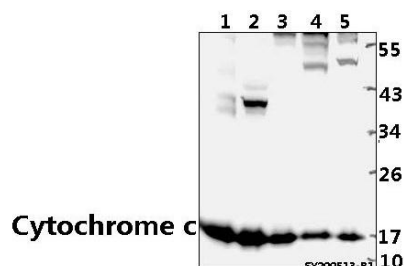
Storage&Stability:

Store at 4 °C short term. Aliquot and store at -20 °C long term. Avoid freeze-thaw cycles.

Specificity:

Cytochrome c polyclonal antibody detects endogenous levels of Cytochrome c protein.

DATA:



Western blot (WB) analysis of Cytochrome c polyclonal antibody at 1:2000 dilution

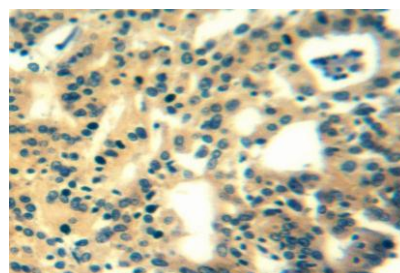
Lane1:The Heart tissue lysate of Mouse(40ug)

Lane2:The Muscle tissue lysate of Rat(40ug)

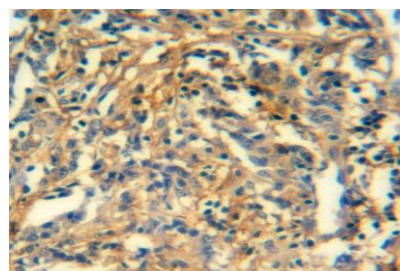
Lane3:HEK293T whole cell lysate(40ug)

Lane4:U-87MG whole cell lysate(40ug)

Lane5:HCT116 whole cell lysate(40ug)



Immunohistochemistry of paraffin-embedded human colon carcinoma using Cytochrome c antibody at dilution of 1:50.



Immunohistochemistry of paraffin-embedded human colon carcinoma using Cytochrome c antibody at dilution of 1:50.

Note:

For research use only, not for use in diagnostic procedure.

Bioworld Technology, Inc.

Add: 1660 South Highway 100, Suite 500 St. Louis Park, MN 55416, USA.

Email: info@bioworld.com

Tel: 6123263284

Fax: 6122933841

Bioworld technology, co. Ltd.

Add: No 9, weidi road Qixia District Nanjing, 210046, P. R. China.

Email: info@biogot.com

Tel: 0086-025-68037686

Fax: 0086-025-68035151