

BCL2 polyclonal antibody

Catalog: CAS7511

Host: Rabbit

Reactivity: Human,Rat

BackGround:

Bcl-2 exerts a survival function in response to a wide range of apoptotic stimuli through inhibition of mitochondrial cytochrome c release. It has been implicated in modulating mitochondrial calcium homeostasis and proton flux. Several phosphorylation sites have been identified within Bcl-2 including Thr56, Ser70, Thr74, and Ser87. It has been suggested that these phosphorylation sites may be targets of the ASK1/MKK7/JNK1 pathway and that phosphorylation of Bcl-2 may be a marker for mitotic events. Mutation of Bcl-2 at Thr56 or Ser87 inhibits its anti-apoptotic activity during glucocorticoid-induced apoptosis of T lymphocytes. Interleukin-3 and JNK-induced Bcl-2 phosphorylation at Ser70 may be required for its enhanced anti-apoptotic functions.

Product:

Rabbit IgG, 1mg/ml in PBS with 0.02% sodium azide, 50% glycerol, pH7.4.

Molecular Weight:

~ 30 kDa

Swiss-Prot:

P10415

Purification&Purity:

The antibody was affinity-purified from rabbit antiserum by affinity-chromatography using epitope-specific immunogen and the purity is > 95% (by SDS-PAGE).

Applications:

WB: 1:2000~1:5000

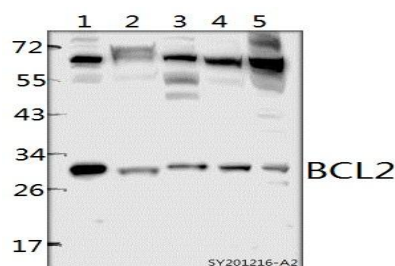
Storage&Stability:

Store at 4 °C short term. Aliquot and store at -20 °C long term. Avoid freeze-thaw cycles.

Specificity:

BCL2 polyclonal antibody detects endogenous levels of BCL2 protein.

DATA:



Western blot (WB) analysis of BCL2 pAb at 1:2000 dilution

Lane1:THP-1 whole cell lysate(20ug)

Lane2:The Thymus tissue lysate of Rat(60ug)

Lane3:HUT78 whole cell lysate(60ug)

Lane4:A2780 whole cell lysate(60ug)

Lane5: HEK293T whole cell lysate(60ug)

Note:

For research use only, not for use in diagnostic procedure.

Bioworld Technology, Inc.

Add: 1660 South Highway 100, Suite 500 St. Louis Park, MN 55416, USA.

Email: info@bioworld.com

Tel: 6123263284

Fax: 6122933841

Bioworld technology, co. Ltd.

Add: No 9, weidi road Qixia District Nanjing, 210046, P. R. China.

Email: info@biogot.com

Tel: 0086-025-68037686

Fax: 0086-025-68035151