

SR-2C (P190) polyclonal antibody

Catalog: BS9129

Host: Rabbit

Reactivity: Human, Mouse, Rat

BackGround:

In the CNS, Serotonin modulates several processes, including anxiety, sleep, appetite, behavior and drug abuse. In platelets and gut, serotonin plays a major role in cardiovascular function and motility of the gastrointestinal tract, respectively. Serotonin mediates its effects through several of G protein-coupled receptors, designated 5-HT receptors or alternatively SR receptors. The SR-2 receptors are comprised of three subtypes, SR-2A, SR-2B and SR-2C, which activate phospholipase C and release intracellular stores of calcium in response to Serotonin. SR-2A has a specific role in tracheal smooth muscle contraction, bronchoconstriction and mediating aldosterone production, and it is also thought to play a role in several psychiatric disorders, including depression and schizophrenia. SR-2B is expressed in embryonic and adult cardiovascular tissues, gut and brain and plays an important role in the pathology of cardiac disorders. SR-2C is thought to mediate the effects of atypical antipsychotic drugs.

Product:

1 mg/ml in Phosphate buffered saline (PBS) with 0.05% sodium azide, approx. pH 7.2.

Molecular Weight:

~ 55 kDa

Swiss-Prot:

P28335

Purification&Purity:

The antibody was affinity-purified from rabbit antiserum by affinity-chromatography using epitope-specific immunogen and the purity is > 95% (by SDS-PAGE).

Applications:

WB: 1:500~1:1000

IHC: 1:50~1:200

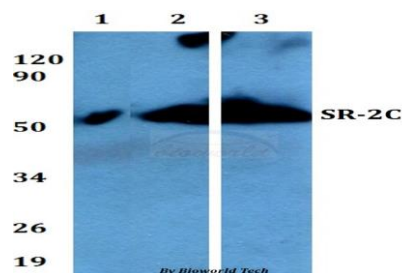
Storage&Stability:

Store at 4 °C short term. Aliquot and store at -20 °C long term. Avoid freeze-thaw cycles.

Specificity:

SR-2C (P190) polyclonal antibody detects endogenous levels of SR-2C protein.

DATA:



Western blot (WB) analysis of SR-2C (P190) polyclonal antibody at 1:500 dilution

Lane1:A549 whole cell lysate

Lane2:NIH-3T3 whole cell lysate

Lane3:H9C2 whole cell lysate

Immunohistochemistry (IHC) analyzes of SR-2C (P190) pAb in paraffin-embedded human brain tissue.

Note:

For research use only, not for use in diagnostic procedure.

Bioworld Technology, Inc.

Add: 1660 South Highway 100, Suite 500 St. Louis Park, MN 55416, USA.

Email: info@bioworld.com

Tel: 6123263284

Fax: 6122933841

Bioworld technology, co. Ltd.

Add: No 9, weidi road Qixia District Nanjing, 210046, P. R. China.

Email: info@biogol.com

Tel: 0086-025-68037686

Fax: 0086-025-68035151