

## SMYD2 (L148) polyclonal antibody

Catalog: BS9025

Host: Rabbit

Reactivity: Human, Mouse, Rat

### BackGround:

SMYD2 (SET and MYND domain containing 2), also known as KMT3C, HSKM-B or ZMYND14, is a 433 amino acid protein that contains one SET domain and one MYND-type zinc finger. Expressed at high levels in liver, heart, kidney, ovary and brain, SMYD2 functions as a lysine methyltransferase that, via methylation of p53, may play a role in repressing p53-mediated transcriptional regulation. The gene encoding MSYD2 maps to human chromosome 1, which spans 260 million base pairs, contains over 3,000 genes and comprises nearly 8% of the human genome. Chromosome 1 houses a large number of disease-associated genes, including those that are involved in familial adenomatous polyposis, Stickler syndrome, Parkinson's disease, Gaucher disease, schizophrenia and Usher syndrome. Aberrations in chromosome 1 are found in a variety of cancers, including head and neck cancer, malignant melanoma and multiple myeloma.

### Product:

1 mg/ml in Phosphate buffered saline (PBS) with 0.05% sodium azide, approx. pH 7.2.

### Molecular Weight:

~50 kDa

### Swiss-Prot:

Q9NRG4

### Purification&Purity:

The antibody was affinity-purified from rabbit antiserum by affinity-chromatography using epitope-specific immunogen and the purity is > 95% (by SDS-PAGE).

### Applications:

WB: 1:500~1:1000

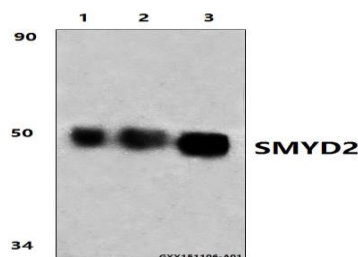
### Storage&Stability:

Store at 4 °C short term. Aliquot and store at -20 °C long term. Avoid freeze-thaw cycles.

### Specificity:

SMYD2 (L148) polyclonal antibody detects endogenous levels of SMYD2 protein.

### DATA:



Western blot (WB) analysis of SMYD2 (L148) polyclonal antibody at 1:1000 dilution

Lane1: A549 whole cell lysate (40ug)

Lane2: The heart tissue lysate of Mouse (30ug)

Lane3: The heart tissue lysate of Rat (30ug)

### Note:

For research use only, not for use in diagnostic procedure.

### Bioworld Technology, Inc.

Add: 1660 South Highway 100, Suite 500 St. Louis Park, MN 55416, USA.

Email: [info@bioworld.com](mailto:info@bioworld.com)

Tel: 6123263284

Fax: 6122933841

### Bioworld technology, co. Ltd.

Add: No 9, weidi road Qixia District Nanjing, 210046, P. R. China.

Email: [info@biogot.com](mailto:info@biogot.com)

Tel: 0086-025-68037686

Fax: 0086-025-68035151