

## FLOT2 polyclonal antibody

Catalog: BS8274

Host: Rabbit

Reactivity: Human, Mouse, Rat

### BackGround:

Lipid rafts are sphingolipid- and cholesterol-rich membrane microdomains that are insoluble in nonionic detergents. Lipid rafts are important for numerous cellular processes, including signal transduction, membrane trafficking and molecular sorting. Flotillins are lipid raft components in neurons and caveolae-associated proteins in A498 kidney cells. Flotillin-2, also designated epidermal surface antigen, is conserved in all mammalian species. Flotillin-1 and -2 have complementary tissue distributions and their expression levels are independently regulated. At the cellular level, Flotillin-2 is ubiquitously expressed, whereas Flotillin-1 is expressed in A498 kidney cells, muscle cell lines and fibroblasts. Stable transfection of a Flotillin-2 fusion protein in COS cells induces filopodia formation and changes epithelial cells to a neuronal appearance. Flotillins form a ternary complex with CAP and Cbl, directing the localization of the CAP-Cbl complex to a lipid raft subdomain of the plasma membrane. Association of ER-X with Flotillin localizes ER-X within plasma membrane caveolae and mediates rapid oestrogen activation of the MAP kinase cascade. The expression of the flotillins is also correlated to the progression of Alzheimer pathology.

### Product:

1mg/ml in PBS with 0.1% Sodium Azide, 50% Glycerol.

### Molecular Weight:

~ 47 kDa

### Swiss-Prot:

Q14254

### Purification&Purity:

The antibody was affinity-purified from rabbit antiserum by affinity-chromatography using epitope-specific immunogen and the purity is > 95% (by SDS-PAGE).

### Applications:

WB: 1:500~1:2000

IF: 1:50~1:200

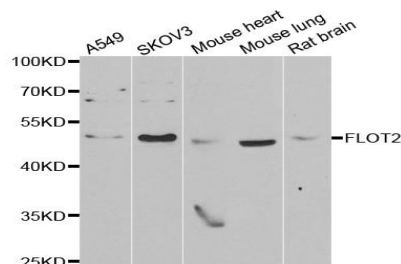
### Storage&Stability:

Store at 4 °C short term. Aliquot and store at -20 °C long term. Avoid freeze-thaw cycles.

### Specificity:

FLOT2 polyclonal antibody detects endogenous levels of FLOT2 protein.

### DATA:



WesternBlot (WB) analysis of FLOT2 polyclonal antibody

### Note:

For research use only, not for use in diagnostic procedure.

### Bioworld Technology, Inc.

Add: 1660 South Highway 100, Suite 500 St. Louis Park, MN 55416, USA.

Email: [info@bioworld.com](mailto:info@bioworld.com)

Tel: 6123263284

Fax: 6122933841

### Bioworld technology, co. Ltd.

Add: No 9, weidi road Qixia District Nanjing, 210046, P. R. China.

Email: [info@biogot.com](mailto:info@biogot.com)

Tel: 0086-025-68037686

Fax: 0086-025-68035151