

## MYOT polyclonal antibody

Catalog: BS8217

Host: Rabbit

Reactivity: Human, Mouse, Rat

### BackGround:

Myotilin, a sarcomeric protein that is encoded by the gene mapping to human chromosome 5q31, binds to  $\alpha$ -actinin and is localized in the Z-line of myofibrils. Myotilin is expressed in skeletal and cardiac muscle, and it co-localizes with  $\alpha$ -actinin in the sarcomeric I-bands where it directly interacts with  $\alpha$ -actinin. Defects in the myotilin gene are reported to cause a form of autosomal dominant limb-girdle muscular dystrophy (LGMD) (1). Symptoms of adult onset LGMD are progressive weakness of the hip and shoulder girdles as well as a distinctive dysarthric pattern of speech. The muscle of affected individuals with LGMD shows degeneration of myofibers, variations in fiber size, fiber splitting, centrally located myonuclei and an enhanced number of autophagic vesicles.

### Product:

1mg/ml in PBS with 0.1% Sodium Azide, 50% Glycerol.

### Molecular Weight:

~ 55 kDa

### Swiss-Prot:

Q9UBF9

### Purification&Purity:

The antibody was affinity-purified from rabbit antiserum by affinity-chromatography using epitope-specific im-

munogen and the purity is > 95% (by SDS-PAGE).

### Applications:

WB 1:500 - 1:2000

IHC 1:50 - 1:200

IF 1:10 - 1:100

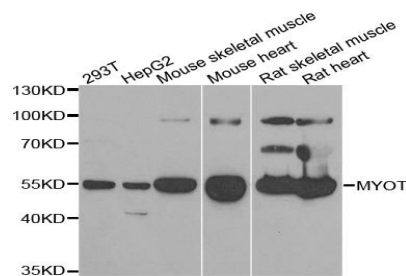
### Storage&Stability:

Store at 4 °C short term. Aliquot and store at -20 °C long term. Avoid freeze-thaw cycles.

### Specificity:

MYOT polyclonal antibody detects endogenous levels of MYOT protein.

### DATA:



WesternBlot (WB) analysis of MYOT polyclonal antibody

### Note:

For research use only, not for use in diagnostic procedure.

### Bioworld Technology, Inc.

Add: 1660 South Highway 100, Suite 500 St. Louis Park, MN 55416, USA.

Email: [info@bioworld.com](mailto:info@bioworld.com)

Tel: 6123263284

Fax: 6122933841

### Bioworld technology, co. Ltd.

Add: No 9, weidi road Qixia District Nanjing, 210046, P. R. China.

Email: [info@biogot.com](mailto:info@biogot.com)

Tel: 0086-025-68037686

Fax: 0086-025-68035151