

## CIAPIN1 polyclonal antibody

Catalog: BS8142

Host: Rabbit

Reactivity: Human, Mouse

### BackGround:

The name of the protein Anamorsin, also designated cytokine-induced apoptosis inhibitor 1 (CIAPIN1), comes from the Latin term “ana-mors-in”, meaning “anti-death molecule”. During hematopoiesis, Anamorsin is crucial for mediating the anti-apoptotic effects of various cytokines. It is a ubiquitously expressed protein, and when it is overexpressed, it confers apoptotic resistance. Anamorsin is primarily expressed in the cytoplasm of liver, pancreas and heart tissue cells and does not show any homology to known apoptosis regulatory molecules of the Bcl-2 or CASP families, or to signal transduction molecules. Anamorsin expression in mouse cells confers resistance to apoptosis caused by IL-3 (interleukin-3) deprivation. Studies demonstrate that the addition of growth factors, such as EPO (erythropoietin), SCF (stem cell factor), TPO (thrombopoietin) or IL-3, all of which depend on RAS signaling, induce dose-dependent expression of Anamorsin in mouse cells.

### Product:

1mg/ml in PBS with 0.1% Sodium Azide, 50% Glycerol.

### Molecular Weight:

~ 34 kDa

### Swiss-Prot:

Q6FI81

### Purification&Purity:

The antibody was affinity-purified from rabbit antiserum by affinity-chromatography using epitope-specific immunogen and the purity is > 95% (by SDS-PAGE).

### Applications:

WB 1:500 - 1:2000

IHC 1:50 - 1:200

IF 1:50 - 1:200

IP 1:50 - 1:100

### Storage&Stability:

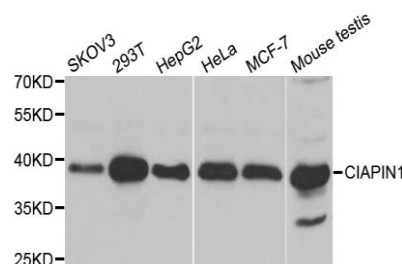
Store at 4 °C short term. Aliquot and store at -20 °C long

term. Avoid freeze-thaw cycles.

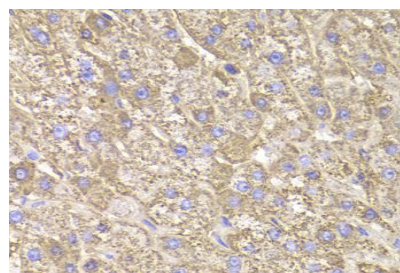
### Specificity:

CIAPIN1 polyclonal antibody detects endogenous levels of CIAPIN1 protein.

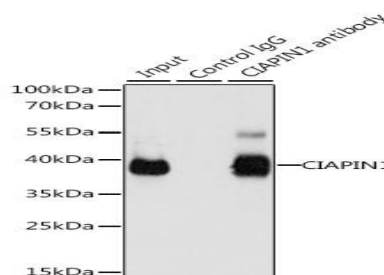
### DATA:



WesternBlot (WB) analysis of CIAPIN1 polyclonal antibody



Immunohistochemistry of paraffin-embedded human liver injury using CIAPIN1 Antibody.



Immunoprecipitation analysis of 200ug extracts of 293T cells, using 3 ug CIAPIN1 antibody.

### Note:

For research use only, not for use in diagnostic procedure.

### Bioworld Technology, Inc.

Add: 1660 South Highway 100, Suite 500 St. Louis Park, MN 55416, USA.

Email: [info@bioworld.com](mailto:info@bioworld.com)

Tel: 6123263284

Fax: 6122933841

### Bioworld technology, co. Ltd.

Add: No 9, weidi road Qixia District Nanjing, 210046, P. R. China.

Email: [info@biogot.com](mailto:info@biogot.com)

Tel: 0086-025-68037686

Fax: 0086-025-68035151



## PRODUCT DATA SHEET

Bioworld Technology, Inc.

---

---

### **Bioworld Technology, Inc.**

Add: 1660 South Highway 100, Suite 500 St. Louis Park,  
MN 55416, USA.

Email: [info@bioworld.com](mailto:info@bioworld.com)

Tel: 6123263284

Fax: 6122933841

### **Bioworld technology, co. Ltd.**

Add: No 9, weidi road Qixia District Nanjing, 210046,  
P. R. China.

Email: [info@biogot.com](mailto:info@biogot.com)

Tel: 0086-025-68037686

Fax: 0086-025-68035151