

Ataxin-1 polyclonal antibody

Catalog: BS7968

Host: Rabbit

Reactivity: Human, Mouse, Rat

BackGround:

Ataxin-1, also designated spinocerebellar ataxia type 1 protein (Sca-1), is differentially expressed and localizes to both the cytoplasm and the nucleus. Mutations in Ataxin-1 are associated with the onset of the autosomal dominant neurodegenerative disorder spinocerebellar ataxia type 1 (SCA-1), which is characterized by progressive neuronal loss in the cerebellum, muscle wasting and ataxia. In Purkinje cells, where SCA-1 is predominantly observed, Ataxin-1 has been shown to directly associate with the Purkinje-enriched leucine-rich acidic nuclear protein (LANP) and the nuclear matrix-associated protein promyelocytic leukemia protein PML. In SCA-1, Ataxin-1 is mutated to encode a polyglutamine protein that forms nuclear aggregates, which interact significantly more strongly with LANP and contribute to the pathogenesis of SCA-1.

Product:

1mg/ml in PBS with 0.1% Sodium Azide, 50% Glycerol.

Molecular Weight:

~ 84 kDa

Swiss-Prot:

P54253

Purification&Purity:

The antibody was affinity-purified from rabbit antiserum

by affinity-chromatography using epitope-specific immunogen and the purity is > 95% (by SDS-PAGE).

Applications:

WB: 1:500~1:2000

IF: 1:50~1:200

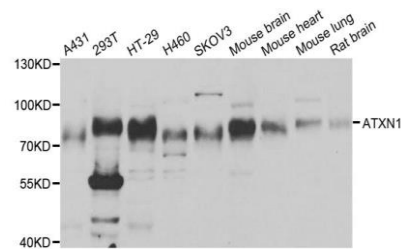
Storage&Stability:

Store at 4 °C short term. Aliquot and store at -20 °C long term. Avoid freeze-thaw cycles.

Specificity:

Ataxin-1 polyclonal antibody detects endogenous levels of Ataxin-1 protein.

DATA:



WesternBlot (WB) analysis of Ataxin-1 polyclonal antibody

Note:

For research use only, not for use in diagnostic procedure.

Bioworld Technology, Inc.

Add: 1660 South Highway 100, Suite 500 St. Louis Park, MN 55416, USA.

Email: info@bioworld.com

Tel: 6123263284

Fax: 6122933841

Bioworld technology, co. Ltd.

Add: No 9, weidi road Qixia District Nanjing, 210046, P. R. China.

Email: info@biogot.com

Tel: 0086-025-68037686

Fax: 0086-025-68035151