

E-Cadherin polyclonal antibody

Catalog: BS79669

Host: Rabbit

Reactivity: Human, Mouse, Rat

BackGround:

This gene encodes a classical cadherin of the cadherin superfamily. Alternative splicing results in multiple transcript variants, at least one of which encodes a prepro-protein that is proteolytically processed to generate the mature glycoprotein. This calcium-dependent cell-cell adhesion protein is comprised of five extracellular cadherin repeats, a transmembrane region and a highly conserved cytoplasmic tail. Mutations in this gene are correlated with gastric, breast, colorectal, thyroid and ovarian cancer. Loss of function of this gene is thought to contribute to cancer progression by increasing proliferation, invasion, and/or metastasis. The ectodomain of this protein mediates bacterial adhesion to mammalian cells and the cytoplasmic domain is required for internalization. This gene is present in a gene cluster with other members of the cadherin family on chromosome 16.

Product:

1mg/ml in PBS with 0.02% sodium azide, 50% glycerol, pH7.2

Molecular Weight:

120KDa

Swiss-Prot:

P12830

Purification&Purity:

The antibody was affinity-purified from rabbit antiserum by affinity-chromatography using epitope-specific immunogen and the purity is > 95% (by SDS-PAGE).

Applications:

WB, 1:500 - 1:1000 | IHC, 1:100 - 1:200 | IF/ICC, 1:100 - 1:500 | IP, 1:10 - 1:100 | FC, 1:100 - 1:200

Storage&Stability:

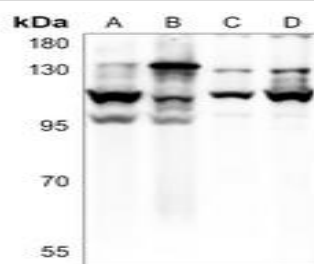
Store at 4 °C short term. Aliquot and store at -20 °C long term. Avoid freeze-thaw cycles.

Specificity:

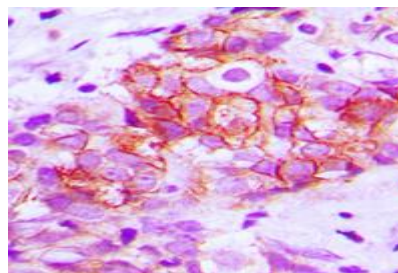
E-Cadherin polyclonal antibody detects endogenous lev-

els of E-Cadherin protein.

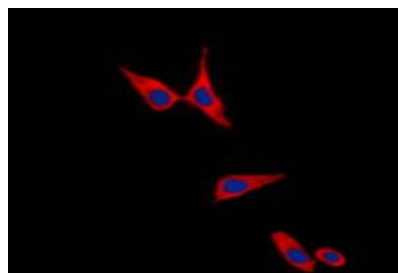
DATA:



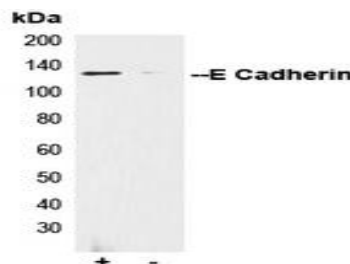
Western blot analysis of E-Cadherin expression in A375 (A), HepG2 (B), mouse brain (C), rat brain (D) whole cell lysates.



Immunohistochemical analysis of E-Cadherin staining in human breast cancer formalin fixed paraffin embedded tissue section.



Immunofluorescent analysis of E-Cadherin staining in PC12 cells.



Immunoprecipitation of E Cadherin from 0.5mg HEK293F whole cell

Bioworld Technology, Inc.

Add: 1660 South Highway 100, Suite 500 St. Louis Park, MN 55416, USA.

Email: info@bioworld.com

Tel: 6123263284

Fax: 6122933841

Bioworld technology, co. Ltd.

Add: No 9, weidi road Qixia District Nanjing, 210046, P. R. China.

Email: info@biogot.com

Tel: 0086-025-68037686

Fax: 0086-025-68035151



PRODUCT DATA SHEET

Bioworld Technology, Inc.

extract lysate, using 5ug of Anti-E-Cadherin Antibody and 50ul of protein G magnetic beads (+). No antibody was added to the control (-).

Note:

For research use only, not for use in diagnostic procedure.

Bioworld Technology, Inc.

Add: 1660 South Highway 100, Suite 500 St. Louis Park,
MN 55416, USA.

Email: info@bioworldde.com

Tel: 6123263284

Fax: 6122933841

Bioworld technology, co. Ltd.

Add: No 9, weidi road Qixia District Nanjing, 210046,
P. R. China.

Email: info@biogot.com

Tel: 0086-025-68037686

Fax: 0086-025-68035151