

Acetyl-Lysine Pan polyclonal antibody

Catalog: BS74032

Host: Rabbit

Reactivity: ALL

BackGround:

Acetyllysine (or acetylated lysine) is an acetyl-derivative of the amino acid lysine. There are multiple forms of acetyllysine - this article refers to N- ϵ -acetyl-L-lysine. The other form is N- α -acetyl-L-lysine. In proteins, the acetylation of lysine residues is an important mechanism of epigenetics. It functions by regulating the binding of histones to DNA in nucleosomes and thereby controlling the expression of genes on that DNA. Non-histone proteins are acetylated as well. Unlike the functionally similar methyllysine, acetyllysine does not carry a positive charge on its side chain.

Product:

Rabbit IgG, 1mg/ml in PBS with 0.02% sodium azide, 50% glycerol, pH7.2

Molecular Weight:

Refer to Figures

Swiss-Prot:

N/A

Purification&Purity:

The antibody was affinity-purified from rabbit antiserum by affinity-chromatography using epitope-specific immunogen and the purity is > 95% (by SDS-PAGE).

Applications:

WB 1:1000 - 1:2000

IHC 1:200 - 1:500

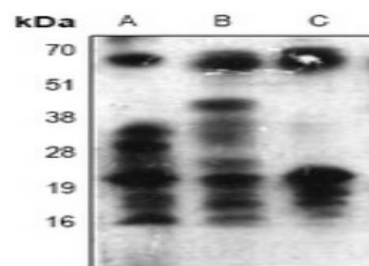
Storage&Stability:

Store at 4 °C short term. Aliquot and store at -20 °C long term. Avoid freeze-thaw cycles.

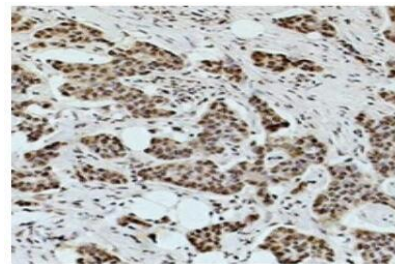
Specificity:

Acetyl-Lysine Pan polyclonal antibody detects endogenous levels of Acetyl-Lysine Pan protein.

DATA:



Western blot analysis of Acetyl Lysine expression in HeLa (A), NIH3T3 (B), rat brain (C) whole cell lysates.



Immunohistochemical analysis of Acetyl Lysine staining in human breast cancer formalin fixed paraffin embedded tissue section.

Note:

For research use only, not for use in diagnostic procedure.

Bioworld Technology, Inc.

Add: 1660 South Highway 100, Suite 500 St. Louis Park, MN 55416, USA.

Email: info@bioworld.com

Tel: 6123263284

Fax: 6122933841

Bioworld technology, co. Ltd.

Add: No 9, weidi road Qixia District Nanjing, 210046, P. R. China.

Email: info@biogot.com

Tel: 0086-025-68037686

Fax: 0086-025-68035151