

## AHCYL1 polyclonal antibody

Catalog: BS71444

Host: Rabbit

Reactivity: Human, Mouse, Rat

### BackGround:

AHCYL1 (S-adenosylhomocysteine hydrolase-like 1), also known as DCAL, IRBIT or PRO0233, is an endoplasmic reticulum (ER) protein that is involved in amino acid biosynthesis. Expressed in dendritic blood cells (DCs), AHCYL1 functions to catalyze the H<sub>2</sub>O-dependent conversion of S-adenosyl-L-homocysteine to L-homocysteine and adenosine, a reaction that uses NAD as a cofactor. Additionally, AHCYL1 contains a PDZ-binding domain and a PEST region through which it can interact with IP3R-I (inositol 1,4,5-trisphosphate (IP<sub>3</sub>) receptor-I), a protein involved in various signaling pathways. This interaction lowers the affinity of IP3R-1 for its substrate, IP<sub>3</sub>, thereby decreasing the rate of IP<sub>3</sub>-IP3R-I binding. AHCYL1 shares 100% homology with its mouse counterpart, indicating a highly conserved function between species. Two isoforms of AHCYL1 are expressed due to alternative splicing events.

### Product:

1mg/ml in PBS with 0.02% sodium azide, 50% glycerol, pH7.3.

### Molecular Weight:

~ 59 kDa

### Swiss-Prot:

O43865

### Purification&Purity:

The antibody was affinity-purified from rabbit antiserum by affinity-chromatography using epitope-specific immunogen and the purity is > 95% (by SDS-PAGE).

### Applications:

WB 1:500 - 1:2000

IHC 1:50 - 1:200

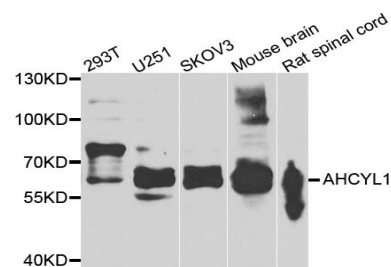
### Storage&Stability:

Store at 4 °C short term. Aliquot and store at -20 °C long term. Avoid freeze-thaw cycles.

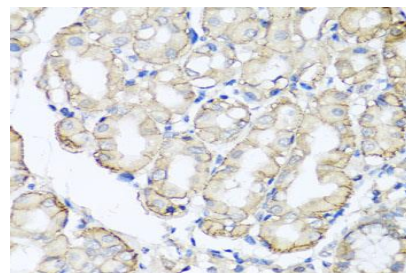
### Specificity:

AHCYL1 polyclonal antibody detects endogenous levels of AHCYL1 protein.

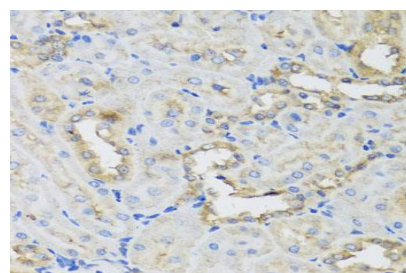
### DATA:



Western blot analysis of extracts of various cell lines, using AHCYL1 antibody.



Immunohistochemistry of paraffin-embedded human stomach using AHCYL1 antibody at dilution of 1:100 (x40 lens).



Immunohistochemistry of paraffin-embedded rat kidney using AHCYL1 antibody at dilution of 1:100 (x40 lens).

### Note:

For research use only, not for use in diagnostic procedure.

### Bioworld Technology, Inc.

Add: 1660 South Highway 100, Suite 500 St. Louis Park, MN 55416, USA.

Email: [info@bioworld.com](mailto:info@bioworld.com)

Tel: 6123263284

Fax: 6122933841

### Bioworld technology, co. Ltd.

Add: No 9, weidi road Qixia District Nanjing, 210046, P. R. China.

Email: [info@biogot.com](mailto:info@biogot.com)

Tel: 0086-025-68037686

Fax: 0086-025-68035151



## PRODUCT DATA SHEET

Bioworld Technology, Inc.

---

---

### **Bioworld Technology, Inc.**

**Add:** 1660 South Highway 100, Suite 500 St. Louis Park,  
MN 55416, USA.

**Email:** [info@bioworld.com](mailto:info@bioworld.com)

**Tel:** 6123263284

**Fax:** 6122933841

### **Bioworld technology, co. Ltd.**

**Add:** No 9, weidi road Qixia District Nanjing, 210046,  
P. R. China.

**Email:** [info@biogot.com](mailto:info@biogot.com)

**Tel:** 0086-025-68037686

**Fax:** 0086-025-68035151