

SSNA1 polyclonal antibody

Catalog: BS71007

Host: Rabbit

Reactivity: Human, Mouse, Rat

BackGround:

SSNA1 (Sjogren syndrome nuclear autoantigen 1), also known as N14 or NA-14 (nuclear autoantigen of 14 kDa), is a 119 amino acid nuclear and cytoplasmic protein that is widely expressed and belongs to the SSNA1 family. While most highly expressed in testis, SSNA1 is found at lower levels in peripheral blood leukocytes, spleen, colon, thymus, ovary, prostate and small intestine, and is thought to be associated with microtubule structures. SSNA1 contains an N-terminal dimeric coiled-coil domain, a C-terminal basic domain and may target spastin activity at the centrosome. The gene encoding SSNA1 maps to human chromosome 9, which houses over 900 genes and comprises nearly 4% of the human genome.

Product:

Rabbit IgG, 1mg/ml in PBS with 0.02% sodium azide, 50% glycerol, pH7.2

Molecular Weight:

~ 13 kDa

Swiss-Prot:

O43805

Purification&Purity:

The antibody was affinity-purified from rabbit antiserum by affinity-chromatography using epitope-specific immunogen and the purity is > 95% (by SDS-PAGE).

Applications:

WB 1:500 - 1:2000

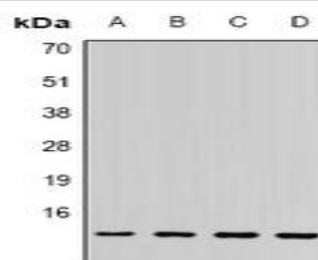
Storage&Stability:

Store at 4°C short term. Aliquot and store at -20°C long term. Avoid freeze-thaw cycles.

Specificity:

SSNA1 polyclonal antibody detects endogenous levels of SSNA1 protein.

DATA:



Western blot analysis of SSNA1 expression in PC3 (A), MCF7 (B), mouse spleen (C), rat brain (D) whole cell lysates.

Note:

For research use only, not for use in diagnostic procedure.

Bioworld Technology, Inc.

Add: 1660 South Highway 100, Suite 500 St. Louis Park, MN 55416, USA.

Email: info@bioworld.com

Tel: 6123263284

Fax: 6122933841

Bioworld technology, co. Ltd.

Add: No 9, weidi road Qixia District Nanjing, 210046, P. R. China.

Email: info@biogot.com

Tel: 0086-025-68037686

Fax: 0086-025-68035151