

## Cathepsin L2 (L114) polyclonal antibody

Catalog: BS7023

Host: Rabbit

Reactivity: Human, Mouse, Rat

### BackGround:

Cathepsin V (CTSU, CTSV, CATL2, cathepsin U, cathepsin L2) is a lysosomal cysteine proteinase that influences corneal physiology, and mediates degradation of invariant chain in human thymus. Cathepsin V is present in corneal epithelium, activated macrophages, and colorectal and breast carcinomas. A 1.8-kb mRNA to Cathepsin V is present in normal human thymus and testis. Cathepsin V is a member of the peptidase C1 family. Cysteine proteinases are synthesized as proenzymes, which are processed to the corresponding proenzymes. The proenzymes are either targeted to the lysosome or continue along the cellular secretory route.

### Product:

1mg/ml in PBS with 0.1% Sodium Azide, 50% Glycerol.

### Molecular Weight:

~ 37 kDa

### Swiss-Prot:

O60911

### Purification&Purity:

The antibody was affinity-purified from rabbit antiserum by affinity-chromatography using epitope-specific immunogen and the purity is > 95% (by SDS-PAGE).

### Applications:

WB: 1:500~1:1000

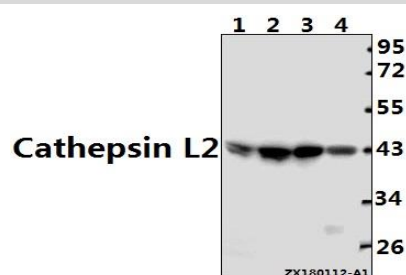
### Storage&Stability:

Store at 4 °C short term. Aliquot and store at -20 °C long term. Avoid freeze-thaw cycles.

### Specificity:

Cathepsin L2 (L114) polyclonal antibody detects endogenous levels of Cathepsin L2 protein.

### DATA:



Western blot (WB) analysis of Cathepsin L2 (L114) pAb at 1:1000 dilution

Lane1: The Testis tissue lysate of Mouse(40ug)

Lane2: The Testis tissue lysate of Rat(40ug)

Lane3: L02 whole cell lysate(20ug)

Lane4: A375 whole cell lysate(20ug)

### Note:

For research use only, not for use in diagnostic procedure.

### Bioworld Technology, Inc.

Add: 1660 South Highway 100, Suite 500 St. Louis Park, MN 55416, USA.

Email: [info@bioworld.com](mailto:info@bioworld.com)

Tel: 6123263284

Fax: 6122933841

### Bioworld technology, co. Ltd.

Add: No 9, weidi road Qixia District Nanjing, 210046, P. R. China.

Email: [info@biogot.com](mailto:info@biogot.com)

Tel: 0086-025-68037686

Fax: 0086-025-68035151