

GLS polyclonal antibody

Catalog: BS66209

Host: Rabbit

Reactivity: Human, Mouse, Rat

BackGround:

Catalyzes the first reaction in the primary pathway for the renal catabolism of glutamine. Plays a role in maintaining acid-base homeostasis. Regulates the levels of the neurotransmitter glutamate in the brain. Isoform 2 lacks catalytic activity. Isoform 1 and isoform 3 are activated by phosphate. Inhibited by BPTES. BPTES binds between subunits and favors dissociation of the tetramer into dimers.

Product:

1mg/ml in PBS with 0.02% sodium azide, 50% glycerol, pH7.2

Molecular Weight:

~ 73 kDa

Swiss-Prot:

O94925

Purification&Purity:

The antibody was affinity-purified from rabbit antiserum by affinity-chromatography using epitope-specific immunogen and the purity is > 95% (by SDS-PAGE).

Applications:

WB: 1:500~1:1000

IHC: 1:50~1:200

IF/ICC: 1:50~1:200

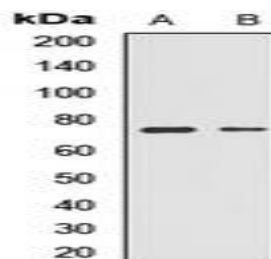
Storage&Stability:

Store at 4 °C short term. Aliquot and store at -20 °C long term. Avoid freeze-thaw cycles.

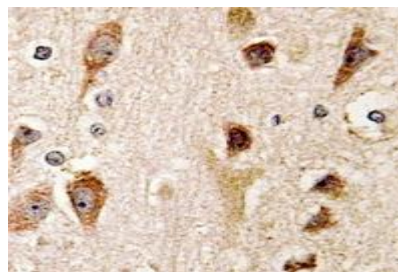
Specificity:

GLS pAb detects endogenous levels of GLS protein.

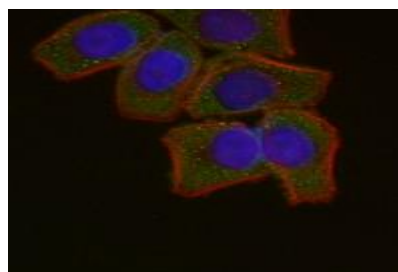
DATA:



Western blot analysis of GLS expression in SW620 (A), mouse lung (B) whole cell lysates.



Immunohistochemical analysis of GLS staining in human brain formalin fixed paraffin embedded tissue section.



Immunofluorescent analysis of GLS staining in NIH3T3 cells.

Note:

For research use only, not for use in diagnostic procedure.

Bioworld Technology, Inc.

Add: 1660 South Highway 100, Suite 500 St. Louis Park, MN 55416, USA.

Email: info@bioworld.com

Tel: 6123263284

Fax: 6122933841

Bioworld technology, co. Ltd.

Add: No 9, weidi road Qixia District Nanjing, 210046, P. R. China.

Email: info@biogot.com

Tel: 0086-025-68037686

Fax: 0086-025-68035151