

## CD1D polyclonal antibody

Catalog: BS6546

Host: Rabbit

Reactivity: Human, Mouse

### BackGround:

The CD1 multigene family encodes five forms of the CD1 T cell surface glycoprotein in human, designated CD1A, 1B, 1C, 1D and 1E. CD1, a type 1 membrane protein, has structural similarity to the MHC class I antigen and has been shown to present lipid antigens for recognition by T lymphocytes. CD1 antigens are associated with  $\beta$ -2-Microglobulin and expressed on cortical thymocytes, Langerhans cells, a B cell subset and some dendritic cells. Adaptor protein complexes and CD1-associated chaperones control CD1 trafficking and the development and activation of CD1-restricted T cells. CD1D is present on human intestinal epithelial cells (IEC) and exists as a  $\beta$ -2-Microglobulin-independent nonglycosylated form or a  $\beta$ -2-Microglobulin-dependent glycosylated form.

### Product:

1mg/ml in PBS with 0.1% Sodium Azide, 50% Glycerol.

### Molecular Weight:

~ 37 kDa

### Swiss-Prot:

P15813

### Purification&Purity:

The antibody was affinity-purified from rabbit antiserum by affinity-chromatography using epitope-specific im-

munogen and the purity is > 95% (by SDS-PAGE).

### Applications:

WB 1:500 - 1:2000

IF 1:50 - 1:200

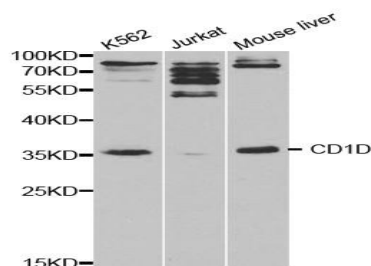
### Storage&Stability:

Store at 4 °C short term. Aliquot and store at -20 °C long term. Avoid freeze-thaw cycles.

### Specificity:

CD1D polyclonal antibody detects endogenous levels of CD1D protein.

### DATA:



Western blot analysis of CD1D polyclonal antibody

### Note:

For research use only, not for use in diagnostic procedure.

### Bioworld Technology, Inc.

Add: 1660 South Highway 100, Suite 500 St. Louis Park, MN 55416, USA.

Email: [info@bioworld.com](mailto:info@bioworld.com)

Tel: 6123263284

Fax: 6122933841

### Bioworld technology, co. Ltd.

Add: No 9, weidi road Qixia District Nanjing, 210046, P. R. China.

Email: [info@biogot.com](mailto:info@biogot.com)

Tel: 0086-025-68037686

Fax: 0086-025-68035151