

## RGS19 (phospho-S151) polyclonal antibody

Catalog: BS64163

Host: Rabbit

Reactivity: Human, Rat, Mouse

### BackGround:

Heterotrimeric G proteins function to relay information from cell surface receptors to intracellular effectors. In mammals, G protein  $\alpha$ ,  $\beta$  and  $\gamma$  polypeptides are encoded by at least 16, 4 and 7 genes, respectively. Most interest in G proteins has been focused on their  $\alpha$  subunits, since these proteins bind and hydrolyze GTP and most obviously regulate the activity of the best studied effectors. Four  $G\alpha$  GTPase-activating proteins (GAPs) have been identified and are designated RGS1 (regulator of G protein signaling), RGS4, RGS10 and GAIP ( $G\alpha$ -interacting protein). Each of these proteins has been shown to deactivate specific  $G\alpha$  isoforms by increasing the rate at which they convert GTP to GDP, RGS1, RGS4 and GAIP bind tightly to and exhibit GAP activity towards  $G\alpha i$ ,  $G\alpha o$  and  $G\alpha t$ , but not  $G\alpha s$ . RGS10 increases the GTP hydrolytic activity of several members of the  $G\alpha i$  subfamily including  $G\alpha i-3$ ,  $G\alpha z$  and  $G\alpha o$ .

### Product:

1 mg/ml in Phosphate buffered saline (PBS) with 0.05% sodium azide, approx. pH 7.3.

### Molecular Weight:

~ 25 kDa

### Swiss-Prot:

P49795

### Purification&Purity:

The antibody was affinity-purified from rabbit antiserum by affinity-chromatography using epitope-specific immunogen and the purity is > 95% (by SDS-PAGE).

### Applications:

WB: 1:500~1:1000

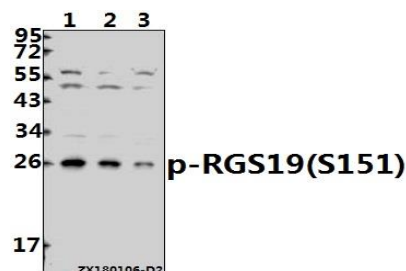
### Storage&Stability:

Store at 4 °C short term. Aliquot and store at -20 °C long term. Avoid freeze-thaw cycles.

### Specificity:

RGS19 (phospho-S151) polyclonal antibody detects endogenous levels of RGS19 protein only when phosphorylated at Ser151.

### DATA:



Western blot (WB) analysis of RGS19 (phospho-S151) polyclonal antibody at 1:500 dilution

Lane1:A549 whole cell lysate(40ug)

Lane2:H1792 whole cell lysate(40ug)

Lane3:HepG2 whole cell lysate(40ug)

### Note:

For research use only, not for use in diagnostic procedure.

### Bioworld Technology, Inc.

Add: 1660 South Highway 100, Suite 500 St. Louis Park, MN 55416, USA.

Email: [info@bioworld.com](mailto:info@bioworld.com)

Tel: 6123263284

Fax: 6122933841

### Bioworld technology, co. Ltd.

Add: No 9, weidi road Qixia District Nanjing, 210046, P. R. China.

Email: [info@biogot.com](mailto:info@biogot.com)

Tel: 0086-025-68037686

Fax: 0086-025-68035151