

## EPHA8 (phospho-Y838) polyclonal antibody

Catalog: BS64158

Host: Rabbit

Reactivity: Human, Mouse, Rat

### BackGround:

Ephrin type-A receptor 8 is a protein that in humans is encoded by the EPHA8 gene. This gene encodes a member of the ephrin receptor subfamily of the protein-tyrosine kinase family. EPH and EPH-related receptors have been implicated in mediating developmental events, particularly in the nervous system.

### Product:

1 mg/ml in Phosphate buffered saline (PBS) with 0.05% sodium azide, approx. pH 7.3.

### Molecular Weight:

~ 111 kDa

### Swiss-Prot:

P29322

### Purification&Purity:

The antibody was affinity-purified from rabbit antiserum by affinity-chromatography using epitope-specific immunogen and the purity is > 95% (by SDS-PAGE).

### Applications:

WB: 1:500~1:1000

### Storage&Stability:

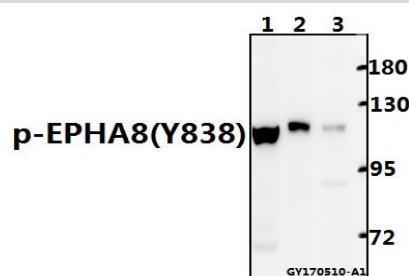
Store at 4 °C short term. Aliquot and store at -20 °C long

term. Avoid freeze-thaw cycles.

### Specificity:

EPHA8 (phospho-Y838) polyclonal antibody detects endogenous levels of EPHA8 protein only when phosphorylated at Tyr838.

### DATA:



Western blot (WB) analysis of EPHA8 (phospho-Y838) polyclonal antibody at 1:500 dilution

Lane1: Hela whole cell lysate (40ug)

Lane2: The Spleen tissue lysate of Mouse (40ug)

Lane3: The Kidney tissue lysate of Rat (40ug)

### Note:

For research use only, not for use in diagnostic procedure.

### Bioworld Technology, Inc.

Add: 1660 South Highway 100, Suite 500 St. Louis Park, MN 55416, USA.

Email: [info@bioworld.com](mailto:info@bioworld.com)

Tel: 6123263284

Fax: 6122933841

### Bioworld technology, co. Ltd.

Add: No 9, weidi road Qixia District Nanjing, 210046, P. R. China.

Email: [info@biogot.com](mailto:info@biogot.com)

Tel: 0086-025-68037686

Fax: 0086-025-68035151