

EIF4G1 (phospho-S1148) polyclonal antibody

Catalog: BS64046

Host: Rabbit

Reactivity: Human, Mouse, Rat

BackGround:

The initiation of protein synthesis in eukaryotic cells is regulated by interactions between protein initiation factors and RNA molecules. The eukaryotic initiation complex eIF4F exists in vitro as a trimeric complex of eIF4G, eIF4E, and eIF4A. Together, the complex allows ribosome binding to mRNA by inducing the unwinding of mRNA secondary structures. eIF4E binds to the mRNA "cap" during an early step in the initiation of protein synthesis. eIF4A acts as an ATP-dependent RNA helicase. eIF4G acts as a bridge between eIF4E, eIF4A, and the eIF3 complex.

Product:

1 mg/ml in Phosphate buffered saline (PBS) with 0.05% sodium azide, approx. pH 7.3.

Molecular Weight:

~ 175 kDa

Swiss-Prot:

Q04637

Purification&Purity:

The antibody was affinity-purified from rabbit antiserum by affinity-chromatography using epitope-specific immunogen and the purity is > 95% (by SDS-PAGE).

Applications:

WB: 1:500~1:1000

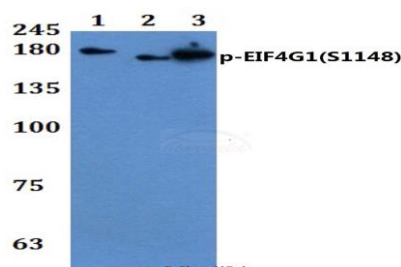
Storage&Stability:

Store at 4 °C short term. Aliquot and store at -20 °C long term. Avoid freeze-thaw cycles.

Specificity:

p-EIF4G1(S1148) pAb detects endogenous levels of EIF4G1 protein around the phosphorylation site of S1148.

DATA:



Western blot (WB) analysis of p-EIF4G1(S1148) polyclonal antibody at 1:500 dilution Lane1:THP-1 treated with EGF(0.1ng/m) 30 min whole cell lysate

Lane2:PC12 treated with EGF(0.1ng/m) 30 min whole cell lysate

Lane3:Raw264.7 treated with EGF(0.1ng/m) 30 min whole cell lysate

Note:

For research use only, not for use in diagnostic procedure.

Bioworld Technology, Inc.

Add: 1660 South Highway 100, Suite 500 St. Louis Park, MN 55416, USA.

Email: info@bioworld.com

Tel: 6123263284

Fax: 6122933841

Bioworld technology, co. Ltd.

Add: No 9, weidi road Qixia District Nanjing, 210046, P. R. China.

Email: info@biogot.com

Tel: 0086-025-68037686

Fax: 0086-025-68035151