

## GPR42 polyclonal antibody

Catalog: BS62047

Host: Rabbit

Reactivity: Human,Rat,Mouse

### BackGround:

G protein-coupled receptors play a role in cell communication. The receptor is found on gut enteroendocrine L-cells, pancreatic  $\beta$ -cells, and sympathetic neurons, and is implicated in obesity, diabetes, allergic airway disease, and altered immune function. May act as a receptor for short chain fatty acids, such as propionate.

### Product:

1 mg/ml in Phosphate buffered saline (PBS) with 0.05% sodium azide, approx. pH 7.3.

### Molecular Weight:

~ 38 kDa

### Swiss-Prot:

O15529

### Purification&Purity:

The antibody was affinity-purified from rabbit antiserum by affinity-chromatography using epitope-specific immunogen and the purity is > 95% (by SDS-PAGE).

### Applications:

WB: 1:500~1:1000

### Storage&Stability:

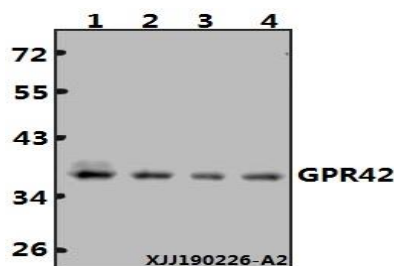
Store at 4 °C short term. Aliquot and store at -20 °C long

term. Avoid freeze-thaw cycles.

### Specificity:

GPR42 polyclonal antibody detects endogenous levels of GPR42 protein.

### DATA:



Western blot (WB) analysis of GPR42 polyclonal antibody at 1:500 dilution

Lane1:HCT116 whole cell lysate(40  $\mu$ g)

Lane2:U-87MG whole cell lysate(40  $\mu$ g)

Lane3:The Brain tissue lysate of Rat(40ug)

Lane4:The Brain tissue lysate of Mouse(40ug)

### Note:

For research use only, not for use in diagnostic procedure.

### Bioworld Technology, Inc.

Add: 1660 South Highway 100, Suite 500 St. Louis Park, MN 55416, USA.

Email: [info@bioworld.com](mailto:info@bioworld.com)

Tel: 6123263284

Fax: 6122933841

### Bioworld technology, co. Ltd.

Add: No 9, weidi road Qixia District Nanjing, 210046, P. R. China.

Email: [info@biogot.com](mailto:info@biogot.com)

Tel: 0086-025-68037686

Fax: 0086-025-68035151