

RPS27L polyclonal antibody

Catalog: BS61847

Host: Rabbit

Reactivity: Human, Mouse, Rat

BackGround:

Ribosomal protein S27-like (RPS27L) is a homologue of 40S ribosomal subunit protein S27 (RPS27) with an unknown function. Using microarray analysis, RPS27L was found to be consistently up-regulated in 5-fluorouracil (5-FU) and adriamycin (ADR)-treated colorectal HCT116 cells in a p53-dependent manner.

Product:

1 mg/ml in Phosphate buffered saline (PBS) with 0.05% sodium azide, approx. pH 7.3.

Molecular Weight:

~ 15 kDa

Swiss-Prot:

Q71UM5

Purification&Purity:

The antibody was affinity-purified from rabbit antiserum by affinity-chromatography using epitope-specific immunogen and the purity is > 95% (by SDS-PAGE).

Applications:

WB: 1:500~1:1000

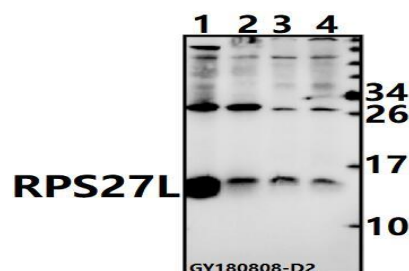
Storage&Stability:

Store at 4 °C short term. Aliquot and store at -20 °C long

term. Avoid freeze-thaw cycles.

Specificity:

RPS27L pAb detects endogenous levels of RPS27L protein.

DATA:

Western blot (WB) analysis of RPS27L pAb at 1:500 dilution

Lane1: The Kidney tissue lysate of Mouse (40ug)

Lane2: The Kidney tissue lysate of Rat (40ug)

Lane3: A549 whole cell lysate (40ug)

Lane4: H1792 whole cell lysate (40ug)

Note:

For research use only, not for use in diagnostic procedure.

Bioworld Technology, Inc.

Add: 1660 South Highway 100, Suite 500 St. Louis Park, MN 55416, USA.

Email: info@bioworld.com

Tel: 6123263284

Fax: 6122933841

Bioworld technology, co. Ltd.

Add: No 9, weidi road Qixia District Nanjing, 210046, P. R. China.

Email: info@biogol.com

Tel: 0086-025-68037686

Fax: 0086-025-68035151