

CD272 polyclonal antibody

Catalog: BS61756

Host: Rabbit

Reactivity: Human, Mouse, Rat

BackGround:

B and T lymphocyte attenuator (BTLA) is an immunoglobulin domain-containing glycoprotein whose expression is induced during T-cell activation. BTLA is similar to CTLA-4 and PD-1, all of which are coinhibitory receptors belonging to the CD28 family. However, unlike CTLA-4 and PD-1, BTLA does not interact with B7-Ig family counter receptors. Rather, the herpesvirus entry mediator (HVEM), a TNF receptor, acts as a molecular switch that modulates T-cell activation by propagating inhibitory signals through BTLA. The BTLA/HVEM interaction is conserved between mouse and human, suggesting that this system is an important pathway regulating lymphocyte activation

Product:

1 mg/ml in Phosphate buffered saline (PBS) with 0.05% sodium azide, approx. pH 7.3.

Molecular Weight:

~ 32 kDa

Swiss-Prot:

Q7Z6A9

Purification&Purity:

The antibody was affinity-purified from rabbit antiserum by affinity-chromatography using epitope-specific immunogen and the purity is > 95% (by SDS-PAGE).

Applications:

WB: 1:500~1:1000

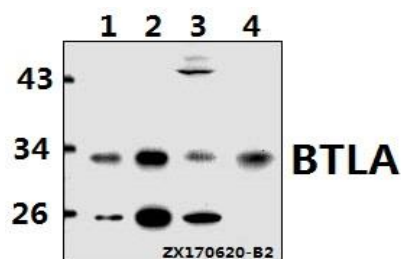
Storage&Stability:

Store at 4 °C short term. Aliquot and store at -20 °C long term. Avoid freeze-thaw cycles.

Specificity:

CD272 polyclonal antibody detects endogenous levels of CD272 protein.

DATA:



Western blot (WB) analysis of CD272 polyclonal antibody at 1:500 dilution

Lane1:HCT116 whole cell lysate(20ug)

Lane2:L02 whole cell lysate(20ug)

Lane3:C6 whole cell lysate(40ug)

Lane4:CT26 whole cell lysate(40ug)

Note:

For research use only, not for use in diagnostic procedure.

Bioworld Technology, Inc.

Add: 1660 South Highway 100, Suite 500 St. Louis Park, MN 55416, USA.

Email: info@bioworld.com

Tel: 6123263284

Fax: 6122933841

Bioworld technology, co. Ltd.

Add: No 9, weidi road Qixia District Nanjing, 210046, P. R. China.

Email: info@biogot.com

Tel: 0086-025-68037686

Fax: 0086-025-68035151