

CYP20A1 polyclonal antibody

Catalog: BS61753

Host: Rabbit

Reactivity: Human, Mouse, Rat

BackGround:

Cytochrome P450 proteins are heme-thiolate monooxygenases that mediate NADPH-dependent electron transport and function to oxidize a variety of structurally unrelated compounds, including steroids, fatty acids and xenobiotics. Specifically, Cytochrome P450s are responsible for metabolizing arachidonic acid to hydroxyeicosatetraenoic acid (a regulator of blood pressure) and epoxyeicosatrienoic acid (a molecule involved in signaling events). CYP20A1 (cytochrome P450, family 20, subfamily A, polypeptide 1), also known as CYP-M, is a 462 amino acid single-pass membrane protein that belongs to the cytochrome P450 family. CYP20A1 is thought to carry its own oxygen as it lacks a conserved I-helix motif and one amino acid of its conserved heme binding site.

Product:

1 mg/ml in Phosphate buffered saline (PBS) with 0.05% sodium azide, approx. pH 7.3.

Molecular Weight:

~ 52 kDa

Swiss-Prot:

Q6UW02

Purification&Purity:

The antibody was affinity-purified from rabbit antiserum by affinity-chromatography using epitope-specific immunogen and the purity is > 95% (by SDS-PAGE).

Applications:

WB: 1:500~1:1000

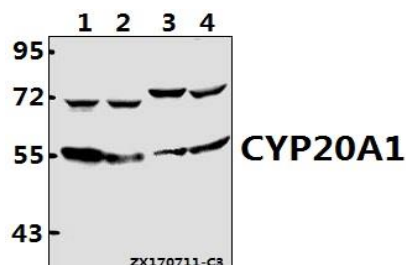
Storage&Stability:

Store at 4 °C short term. Aliquot and store at -20 °C long term. Avoid freeze-thaw cycles.

Specificity:

CYP20A1 polyclonal antibody detects endogenous levels of CYP20A1 protein.

DATA:



Western blot (WB) analysis of CYP20A1 polyclonal antibody at 1:500 dilution

Lane1:MCF-7 whole cell lysate(40ug)

Lane2:HepG2 whole cell lysate(40ug)

Lane3:AML-12 whole cell lysate(40ug)

Lane4:PC12 whole cell lysate(40ug)

Note:

For research use only, not for use in diagnostic procedure.

Bioworld Technology, Inc.

Add: 1660 South Highway 100, Suite 500 St. Louis Park, MN 55416, USA.

Email: info@bioworld.com

Tel: 6123263284

Fax: 6122933841

Bioworld technology, co. Ltd.

Add: No 9, weidi road Qixia District Nanjing, 210046, P. R. China.

Email: info@biogot.com

Tel: 0086-025-68037686

Fax: 0086-025-68035151