

## CYP2D6 polyclonal antibody

Catalog: BS61751

Host: Rabbit

Reactivity: Human, Mouse, Rat

### BackGround:

Cytochrome P450 2D6 (CYP2D6) is a member of the cytochrome P450 superfamily of enzymes. CYP2D6 is located in the endoplasmic reticulum where it oxidizes substrates such as drugs and environmental chemicals. CYP2D6 metabolizes more than 25% of current commonly used drugs including antidepressants, antipsychotics, analgesics, beta-adrenergic blocking agents, antiarrhythmics, and antiemetics. The CYP2D6 gene is highly polymorphic in humans, resulting in phenotypes that vary from poor metabolizer to super metabolizer. A patient's CYP2D6 genotype was shown to be a good predictor of drug response and side effects and is thus used to guide treatments. Although abundantly expressed in liver, CYP2D6 is also expressed in other organs including brain. In brain, CYP2D6 and other CYP family members are expressed in a cell-specific, region-specific manner. CYP2D6 functions as a neuroprotective enzyme that increases with age and is induced by nicotine and alcohol.

### Product:

1 mg/ml in Phosphate buffered saline (PBS) with 0.05% sodium azide, approx. pH 7.3.

### Molecular Weight:

~ 50 kDa

### Swiss-Prot:

P10635

### Purification&Purity:

The antibody was affinity-purified from rabbit antiserum by affinity-chromatography using epitope-specific im-

munogen and the purity is > 95% (by SDS-PAGE).

### Applications:

WB: 1:500~1:1000

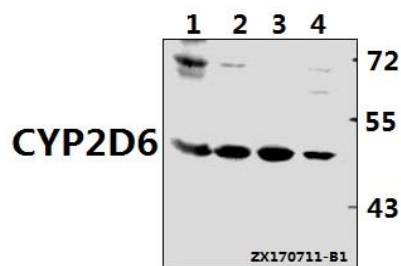
### Storage&Stability:

Store at 4 °C short term. Aliquot and store at -20 °C long term. Avoid freeze-thaw cycles.

### Specificity:

CYP2D6 polyclonal antibody detects endogenous levels of CYP2D6 protein.

### DATA:



Western blot (WB) analysis of CYP2D6 polyclonal antibody at 1:500 dilution

Lane1: The Brain tissue lysate of Mouse(40ug)

Lane2: The Brain tissue lysate of Rat(40ug)

Lane3: MCF-7 whole cell lysate(40ug)

Lane4: HepG2 whole cell lysate(40ug)

### Note:

For research use only, not for use in diagnostic procedure.

### Bioworld Technology, Inc.

Add: 1660 South Highway 100, Suite 500 St. Louis Park, MN 55416, USA.

Email: [info@bioworld.com](mailto:info@bioworld.com)

Tel: 6123263284

Fax: 6122933841

### Bioworld technology, co. Ltd.

Add: No 9, weidi road Qixia District Nanjing, 210046, P. R. China.

Email: [info@biogol.com](mailto:info@biogol.com)

Tel: 0086-025-68037686

Fax: 0086-025-68035151