

## EIF2S2 polyclonal antibody

Catalog: BS61711

Host: Rabbit

Reactivity: Human, Mouse, Rat

### BackGround:

The initiation of protein synthesis in eukaryotic cells is regulated by interactions between protein initiation factors and RNA molecules. The eukaryotic initiation complex eIF2 exists as a heterotrimeric complex of eIF2 $\alpha$ , eIF2 $\beta$  and eIF2 $\gamma$ . eIF2 functions in the early stages of protein synthesis, by forming a ternary complex with GTP and tRNA. This complex binds to the 40S ribosomal subunit, followed by mRNA binding to 40S to form the 43S preinitiation complex, the release of eIF2 from 40S, and the hydrolysis of GTP. Phosphorylation of eIF2 $\alpha$  correlates with inhibition of translation initiation.

### Product:

1 mg/ml in Phosphate buffered saline (PBS) with 0.05% sodium azide, approx. pH 7.3.

### Molecular Weight:

~ 50 kDa

### Swiss-Prot:

P20042

### Purification&Purity:

The antibody was affinity-purified from rabbit antiserum by affinity-chromatography using epitope-specific immunogen and the purity is > 95% (by SDS-PAGE).

### Applications:

WB: 1:500~1:1000

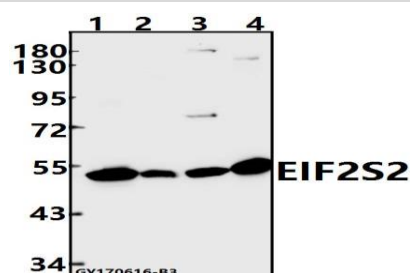
### Storage&Stability:

Store at 4 °C short term. Aliquot and store at -20 °C long term. Avoid freeze-thaw cycles.

### Specificity:

EIF2S2 polyclonal antibody detects endogenous levels of EIF2S2 protein.

### DATA:



Western blot (WB) analysis of EIF2S2 polyclonal antibody at 1:500 dilution

Lane1:A549 whole cell lysate(40ug)

Lane2:CT26 whole cell lysate(40ug)

Lane3:C6 whole cell lysate(40ug)

Lane4:HEK293T whole cell lysate(40ug)

### Note:

For research use only, not for use in diagnostic procedure.

### Bioworld Technology, Inc.

Add: 1660 South Highway 100, Suite 500 St. Louis Park, MN 55416, USA.

Email: [info@bioworld.com](mailto:info@bioworld.com)

Tel: 6123263284

Fax: 6122933841

### Bioworld technology, co. Ltd.

Add: No 9, weidi road Qixia District Nanjing, 210046, P. R. China.

Email: [info@biogol.com](mailto:info@biogol.com)

Tel: 0086-025-68037686

Fax: 0086-025-68035151