

## DMGDH polyclonal antibody

Catalog: BS61706

Host: Rabbit

Reactivity: Human, Mouse, Rat

### BackGround:

DMGDH (dimethylglycine dehydrogenase), also known as ME2GLYDH or DMGDHD, is an 866 amino acid mitochondrial protein that plays a role in choline catabolism by catalyzing the demethylation of dimethylglycine to form sarcosine. Existing as a monomer that belongs to the gcvT family, DMGDH utilizes flavin adenine dinucleotide (FAD) and folate as cofactors. DMGDH is encoded by a gene that maps to human chromosome 5q14.1, defects of which are the cause of DMGDH deficiency (DMGDHD). Patients with DMGDHD experience muscle fatigue, have a fish-like odor and excrete an elevated level of N,N-dimethylglycine (DMG) in urine.

### Product:

1 mg/ml in Phosphate buffered saline (PBS) with 0.05% sodium azide, approx. pH 7.3.

### Molecular Weight:

~ 96 kDa

### Swiss-Prot:

Q9UI17

### Purification&Purity:

The antibody was affinity-purified from rabbit antiserum by affinity-chromatography using epitope-specific immunogen and the purity is > 95% (by SDS-PAGE).

### Applications:

WB: 1:500~1:1000

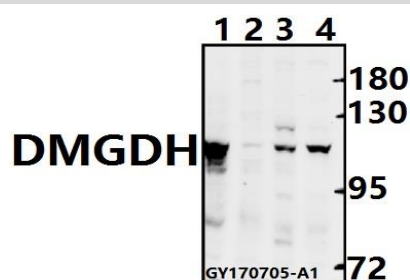
### Storage&Stability:

Store at 4 °C short term. Aliquot and store at -20 °C long term. Avoid freeze-thaw cycles.

### Specificity:

DMGDH polyclonal antibody detects endogenous levels of DMGDH protein.

### DATA:



Western blot (WB) analysis of DMGDH polyclonal antibody at 1:500 dilution

Lane1:CT26 whole cell lysate(40ug)

Lane2:H9C2 whole cell lysate(40ug)

Lane3:L02 whole cell lysate(40ug)

Lane4:MCF-7 whole cell lysate(40ug)

### Note:

For research use only, not for use in diagnostic procedure.

### Bioworld Technology, Inc.

Add: 1660 South Highway 100, Suite 500 St. Louis Park, MN 55416, USA.

Email: [info@bioworld.com](mailto:info@bioworld.com)

Tel: 6123263284

Fax: 6122933841

### Bioworld technology, co. Ltd.

Add: No 9, weidi road Qixia District Nanjing, 210046, P. R. China.

Email: [info@biogot.com](mailto:info@biogot.com)

Tel: 0086-025-68037686

Fax: 0086-025-68035151