

PNPLA6 polyclonal antibody

Catalog: BS61695

Host: Rabbit

Reactivity: Human, Mouse, Rat

BackGround:

Neuropathy target esterase (NTE) is a member of a newly discovered protein family, with a domain conserved through evolution. It is an integral membrane protein present in all neurons and in some non-neural cell types of vertebrates. NTE is important in neural development and has the capacity to hydrolyse esters. It is important in the cell-signalling pathway controlling interactions between neurons and accessory glial cells in nervous system development. NTE can be modified by organophosphates, which can cause neuropathy (characterized by axonal degeneration) in humans. NTE loss can lead to prominent neuronal pathology in the thalamus and hippocampus and can also lead to defects in the cerebellum.

Product:

1 mg/ml in Phosphate buffered saline (PBS) with 0.05% sodium azide, approx. pH 7.3.

Molecular Weight:

~ 150 kDa

Swiss-Prot:

Q8IY17

Purification&Purity:

The antibody was affinity-purified from rabbit antiserum by affinity-chromatography using epitope-specific immunogen and the purity is > 95% (by SDS-PAGE).

Applications:

WB: 1:500~1:1000

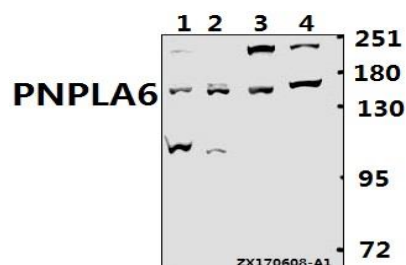
Storage&Stability:

Store at 4 °C short term. Aliquot and store at -20 °C long term. Avoid freeze-thaw cycles.

Specificity:

PNPLA6 polyclonal antibody detects endogenous levels of PNPLA6 protein.

DATA:



Western blot (WB) analysis of PNPLA6 polyclonal antibody at 1:500 dilution

Lane1:HEK293T whole cell lysate(40ug)

Lane2:COS-7 whole cell lysate(40ug)

Lane3:C6 whole cell lysate(40ug)

Lane4:MEF whole cell lysate(40ug)

Note:

For research use only, not for use in diagnostic procedure.

Bioworld Technology, Inc.

Add: 1660 South Highway 100, Suite 500 St. Louis Park, MN 55416, USA.

Email: info@bioworld.com

Tel: 6123263284

Fax: 6122933841

Bioworld technology, co. Ltd.

Add: No 9, weidi road Qixia District Nanjing, 210046, P. R. China.

Email: info@biogot.com

Tel: 0086-025-68037686

Fax: 0086-025-68035151