

EMX1 polyclonal antibody

Catalog: BS61687

Host: Rabbit

Reactivity: Human, Mouse, Rat

BackGround:

Emx1 and Emx2 are human homologs to the Drosophila developmental genes empty spiracles expressed in anterior body regions during early Drosophila embryogenesis. Emx1 and Emx2 are homeobox proteins expressed in the developing vertebrate brain. Emx2 is expressed in the dorsal telencephalon and small diencephalic regions, while Emx1 expression is exclusively confined to pyramidal neurons of the dorsal telencephalon. In the embryonic brain, Emx1 is expressed in both proliferating and differentiating neurons while Emx2 is expressed only in proliferating neurons. OTX1 and OTX2 are human homologs of the Drosophila developmental genes orthodenticle. In development, the sequence of expression begins with OTX2 at day 10 post coitum followed by OTX1, Emx2 and finally Emx1. The genes encoding human Emx1 and Emx2 map to chromosomes 2p13.2 and 10q26.1, respectively.

Product:

1 mg/ml in Phosphate buffered saline (PBS) with 0.05% sodium azide, approx. pH 7.3.

Molecular Weight:

~ 28 kDa

Swiss-Prot:

Q04741

Purification&Purity:

The antibody was affinity-purified from rabbit antiserum by affinity-chromatography using epitope-specific immunogen and the purity is > 95% (by SDS-PAGE).

Applications:

WB: 1:500~1:1000

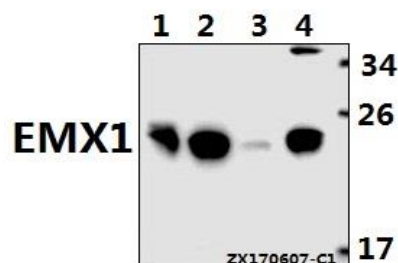
Storage&Stability:

Store at 4 °C short term. Aliquot and store at -20 °C long term. Avoid freeze-thaw cycles.

Specificity:

EMX1 polyclonal antibody detects endogenous levels of EMX1 protein.

DATA:



Western blot (WB) analysis of EMX1 polyclonal antibody at 1:500 dilution

Lane1: COS-7 whole cell lysate(40ug)

Lane2: HEK293T whole cell lysate(40ug)

Lane3: The Brain tissue lysate of Mouse(40ug)

Lane4: C6 whole cell lysate(40ug)

Note:

For research use only, not for use in diagnostic procedure.

Bioworld Technology, Inc.

Add: 1660 South Highway 100, Suite 500 St. Louis Park, MN 55416, USA.

Email: info@bioworld.com

Tel: 6123263284

Fax: 6122933841

Bioworld technology, co. Ltd.

Add: No 9, weidi road Qixia District Nanjing, 210046, P. R. China.

Email: info@biogot.com

Tel: 0086-025-68037686

Fax: 0086-025-68035151