

CNTN1 polyclonal antibody

Catalog: BS61684

Host: Rabbit

Reactivity: Human, Mouse, Rat

BackGround:

Changes in synaptic efficacy can mediate crucial processes during learning and memory formation. Accumulating evidence implicates cell adhesion molecules in activity-dependent synaptic modifications associated with paired-pulse facilitation (PPF), long-term potentiation (LTP) and long-term depression (LTD). Among the cell adhesion molecules involved in these processes are the contactins. Contactins are immunoglobulin superfamily members that play a selective role in synaptic plasticity, PPF and LTD, and may regulate cell-cell interactions contributing to synaptic plasticity in conjunction with other synapse targeting molecules, including paranodin and phosphacan. In addition, contactins are essential components that control expression and distribution of Na⁺ channels in neurons, junctional attachment at the paranode, and ultimately the physiology of the myelinated nerve. The human Contactin 1 gene encodes a 1,018 amino acid protein. The human Contactin 3 gene encodes a 646 amino acid plasmacytoma-associated neuronal glycoprotein. The human Contactin 5 gene encodes a 1,100 amino acid neural adhesion molecule. The human Contactin 6 gene encodes a 1,028 amino acid neural adhesion molecule.

Product:

1 mg/ml in Phosphate buffered saline (PBS) with 0.05% sodium azide, approx. pH 7.3.

Molecular Weight:

~ 113 kDa

Swiss-Prot:

Q12860

Purification&Purity:

The antibody was affinity-purified from rabbit antiserum by affinity-chromatography using epitope-specific immunogen and the purity is > 95% (by SDS-PAGE).

Applications:

WB: 1:500~1:1000

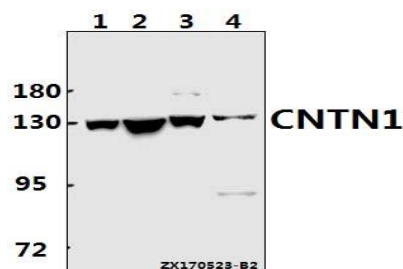
Storage&Stability:

Store at 4 °C short term. Aliquot and store at -20 °C long term. Avoid freeze-thaw cycles.

Specificity:

CNTN1 polyclonal antibody detects endogenous levels of CNTN1 protein.

DATA:



Western blot (WB) analysis of CNTN1 polyclonal antibody at 1:500 dilution

Lane1:A549 whole cell lysate(40ug)

Lane2:HEK293T whole cell lysate(40ug)

Lane3:C6 whole cell lysate(40ug)

Lane4:MEF whole cell lysate(40ug)

Note:

For research use only, not for use in diagnostic procedure.

Bioworld Technology, Inc.

Add: 1660 South Highway 100, Suite 500 St. Louis Park, MN 55416, USA.

Email: info@bioworld.com

Tel: 6123263284

Fax: 6122933841

Bioworld technology, co. Ltd.

Add: No 9, weidi road Qixia District Nanjing, 210046, P. R. China.

Email: info@biogot.com

Tel: 0086-025-68037686

Fax: 0086-025-68035151