

FBL polyclonal antibody

Catalog: BS6167

Host: Rabbit

Reactivity: Human, Mouse, Rat, Monkey

BackGround:

Involved in pre-rRNA processing. Utilizes the methyl donor S-adenosyl-L-methionine to catalyze the site-specific 2'-hydroxyl methylation of ribose moieties in pre-ribosomal RNA. Site specificity is provided by a guide RNA that base pairs with the substrate. Methylation occurs at a characteristic distance from the sequence involved in base pairing with the guide RNA.

Product:

1mg/ml in PBS with 0.1% Sodium Azide, 50% Glycerol.

Molecular Weight:

~ 34 kDa

Swiss-Prot:

P22087

Purification&Purity:

The antibody was affinity-purified from rabbit antiserum by affinity-chromatography using epitope-specific immunogen and the purity is > 95% (by SDS-PAGE).

Applications:

WB: 1:500~1:2000

IHC/IF: 1:50~1:200

IP: 1:50~1:200

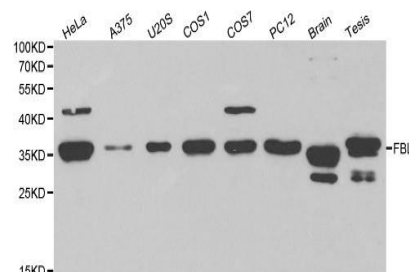
Storage&Stability:

Store at 4 °C short term. Aliquot and store at -20 °C long term. Avoid freeze-thaw cycles.

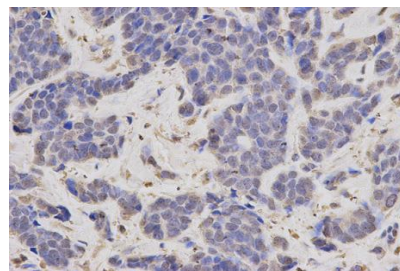
Specificity:

FBL polyclonal antibody detects endogenous levels of FBL protein.

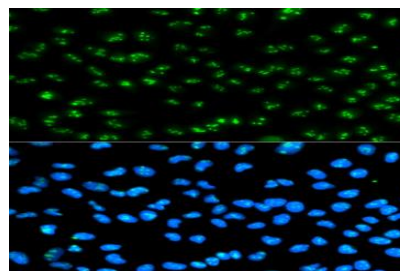
DATA:



WesternBlot (WB) analysis of FBL polyclonal antibody in extracts from HeLa, A375, U2OS, COS1, COS7, PC12 cells and mouse brain, testis tissues.



Immunohistochemistry (IHC) analysis of FBL pAb in paraffin-embedded Human Breast Cancer tissue.



Immunofluorescence analysis of HeLa cells, using FBL polyclonal antibody

Note:

For research use only, not for use in diagnostic procedure.

Bioworld Technology, Inc.

Add: 1660 South Highway 100, Suite 500 St. Louis Park, MN 55416, USA.

Email: info@bioworld.com

Tel: 6123263284

Fax: 6122933841

Bioworld technology, co. Ltd.

Add: No 9, weidi road Qixia District Nanjing, 210046, P. R. China.

Email: info@biogot.com

Tel: 0086-025-68037686

Fax: 0086-025-68035151