

## CADM3 polyclonal antibody

Catalog: BS61572

Host: Rabbit

Reactivity: Human, Mouse, Rat

### BackGround:

Immunoglobulin superfamily member 4B (Cell adhesion molecule 3, Nectinlike protein 1) is a nectin family gene product that contains 2 Ig-like C2-type (immunoglobulin-like) domains and an Ig-like V-type (immunoglobulin-like) domain. IGSF4B is a single-pass type I membrane protein that localizes to cell-cell interacting sites along the plasma membrane. IGSF4B functions as a cell adhesion molecule at cell-cell junctions. IGSF4B can be found as a homodimer and has a dual calcium-independent adhesion function; a homophilic cell-cell interaction and a heterophilic cell-cell interaction involving IGSF4, Nectin 1 and Nectin 3. IGSF4B may also interact with EPB41L1 which has a potential for regulating structure or function of cell-cell junctions by similarity. Isoform 1 is expressed in adult and fetal brain. Isoform 2 is highly expressed in the cerebellum but is also weakly expressed in placenta. IGSF4B has been found to be markedly over-expressed in glioma cell lines and prostate cancer cell lines.

### Product:

1 mg/ml in Phosphate buffered saline (PBS) with 0.05% sodium azide, approx. pH 7.3.

### Molecular Weight:

~ 50 kDa

### Swiss-Prot:

Q8N126

### Purification&Purity:

The antibody was affinity-purified from rabbit antiserum by affinity-chromatography using epitope-specific immunogen and the purity is > 95% (by SDS-PAGE)

### Applications:

WB: 1:500~1:1000

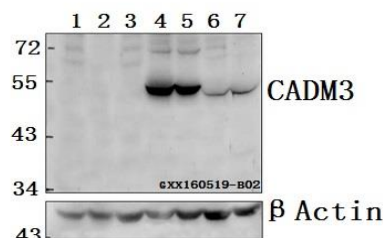
### Storage&Stability:

Store at 4 °C short term. Aliquot and store at -20 °C long term. Avoid freeze-thaw cycles.

### Specificity:

CADM3 polyclonal antibody detects endogenous levels of CADM3 protein.

### DATA:



Western blot (WB) analysis of CADM3 polyclonal antibody at 1:500 dilution

Lane1:HCT116 whole cell lysate(40ug)

Lane2:HCC827 whole cell lysate(40ug)

Lane3:PC3 whole cell lysate(40ug)

Lane4:The Brain tissue lysate of Mouse(40ug)

Lane5:The Brain tissue lysate of Rat(40ug)

Lane6:The fetal Brain tissue lysate of Mouse(40ug)

Lane7:The fetal Brain tissue lysate of Rat(40ug)

### Note:

For research use only, not for use in diagnostic procedure.

### Bioworld Technology, Inc.

Add: 1660 South Highway 100, Suite 500 St. Louis Park, MN 55416, USA.

Email: [info@bioworld.com](mailto:info@bioworld.com)

Tel: 6123263284

Fax: 6122933841

### Bioworld technology, co. Ltd.

Add: No 9, weidi road Qixia District Nanjing, 210046, P. R. China.

Email: [info@biogot.com](mailto:info@biogot.com)

Tel: 0086-025-68037686

Fax: 0086-025-68035151