

## BCLAF1 polyclonal antibody

Catalog: BS61571

Host: Rabbit

Reactivity: Human, Mouse, Rat

### BackGround:

Apoptosis defines a set of cascades which, when initiated, programs the cell to undergo lethal changes such as membrane blebbing, mitochondrial breakdown and DNA fragmentation. Bcl-2 is one of many key regulators of apoptosis which are essential for proper development, tissue homeostasis and protection against foreign pathogens. BCLAF1 (BCL2-associated transcription factor 1), also known as BTF, is a 920 amino acid protein that localizes to both the nucleus and the cytoplasm. Expressed throughout the body, BCLAF1 functions as a death-promoting factor that interacts with and represses the transcription of Bcl-2, thereby influencing the regulation of apoptosis. Overexpression of BCLAF1 results in the relocation of BCLAF1 to the nuclear envelope and the subsequent induction of apoptosis, an event that may occur as a result of DNA damage. Four isoforms of BCLAF1 exist due to alternative splicing events.

### Product:

1 mg/ml in Phosphate buffered saline (PBS) with 0.05% sodium azide, approx. pH 7.3.

### Molecular Weight:

~ 150 kDa

### Swiss-Prot:

Q9NYF8

### Purification&Purity:

The antibody was affinity-purified from rabbit antiserum by affinity-chromatography using epitope-specific immunogen and the purity is > 95% (by SDS-PAGE)

### Applications:

WB: 1:500~1:1000

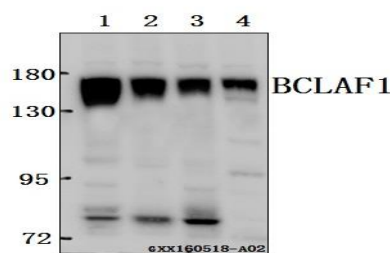
### Storage&Stability:

Store at 4 °C short term. Aliquot and store at -20 °C long term. Avoid freeze-thaw cycles.

### Specificity:

BCLAF1 polyclonal antibody detects endogenous levels of BCLAF1 protein.

### DATA:



Western blot (WB) analysis of BCLAF1 polyclonal antibody at 1:500 dilution

Lane1:SGC7901 whole cell lysate(40ug)

Lane2:HCC827 whole cell lysate(40ug)

Lane3:HCT116 whole cell lysate(40ug)

Lane4:The Testis lysate of Mouse(40ug)

### Note:

For research use only, not for use in diagnostic procedure.

### Bioworld Technology, Inc.

Add: 1660 South Highway 100, Suite 500 St. Louis Park, MN 55416, USA.

Email: [info@bioworld.com](mailto:info@bioworld.com)

Tel: 6123263284

Fax: 6122933841

### Bioworld technology, co. Ltd.

Add: No 9, weidi road Qixia District Nanjing, 210046, P. R. China.

Email: [info@biogol.com](mailto:info@biogol.com)

Tel: 0086-025-68037686

Fax: 0086-025-68035151