

GPR179 polyclonal antibody

Catalog: BS61329

Host: Rabbit

Reactivity: Human

BackGround:

Orphan receptor, involved in vision. Required for signal transduction through retinal depolarizing bipolar cells. An autosomal recessive, non-progressive retinal disorder characterized by impaired night vision, absence of the electroretinogram (ERG) b-wave, and variable degrees of involvement of other visual functions. Affected individuals have an ERG waveform that lacks the b-wave because of failure to transmit the photoreceptor signal through the retinal depolarizing bipolar cells.

Product:

1 mg/ml in Phosphate buffered saline (PBS) with 0.05% sodium azide, approx. pH 7.3.

Molecular Weight:

~ 257 kDa

Swiss-Prot:

Q6PRD1

Purification&Purity:

The antibody was affinity-purified from rabbit antiserum by affinity-chromatography using epitope-specific immunogen and the purity is > 95% (by SDS-PAGE).

Applications:

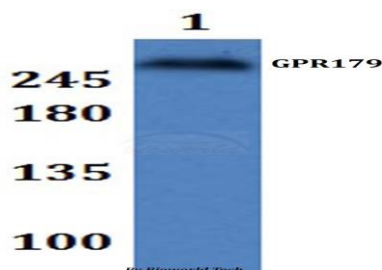
WB: 1:500~1:1000

Storage&Stability:

Store at 4 °C short term. Aliquot and store at -20 °C long term. Avoid freeze-thaw cycles.

Specificity:

GPR179 polyclonal antibody detects endogenous levels of GPR179 protein.

DATA:


Western blot (WB) analysis of GPR179 polyclonal antibody at 1:500 dilution

Lane1:HEPG2 whole cell lysate

Note:

For research use only, not for use in diagnostic procedure.

Bioworld Technology, Inc.

Add: 1660 South Highway 100, Suite 500 St. Louis Park, MN 55416, USA.

Email: info@bioworld.com

Tel: 6123263284

Fax: 6122933841

Bioworld technology, co. Ltd.

Add: No 9, weidi road Qixia District Nanjing, 210046, P. R. China.

Email: info@biogol.com

Tel: 0086-025-68037686

Fax: 0086-025-68035151