

Claudin-9 polyclonal antibody

Catalog: BS61303

Host: Rabbit

Reactivity: Human, Mouse, Rat

BackGround:

The claudin superfamily consists of many structurally related proteins in humans (1). These proteins are important structural and functional components of tight junctions in paracellular transport (1,2). Claudins are located in both epithelial and endothelial cells in all tight junction-bearing tissues (1). Three classes of proteins are known to localize to tight junctions, including the claudins, Occludin and junction adhesion molecule (3). Claudins, which consist of four transmembrane domains and two extracellular loops make up tight junction strands (4). Claudin expression is often highly restricted to specific regions of different tissues and may have an important role in transcellular transport through tight junctions (5). Claudin-9 is highly similar to claudin-3 (also designated clostridium perfringens enterotoxin receptor) (6). Claudin-9 is expressed in simian virus (SV)40-immortalized human corneal epithelial (THCE) cells (7). The human claudin-9 gene maps to chromosome 16p13.3 (6).

Product:

1 mg/ml in Phosphate buffered saline (PBS) with 0.05% sodium azide, approx. pH 7.9.

Molecular Weight:

~ 23 kDa

Swiss-Prot:

O95484

Purification&Purity:

The antibody was affinity-purified from rabbit antiserum by affinity-chromatography using epitope-specific im-

munogen and the purity is > 95% (by SDS-PAGE).

Applications:

WB: 1:500~1:1000

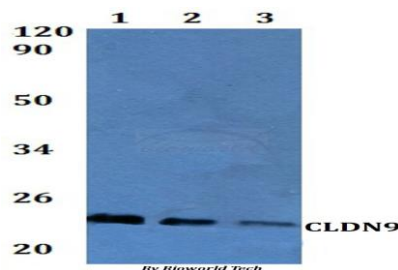
Storage&Stability:

Store at 4 °C short term. Aliquot and store at -26 °C long term. Avoid freeze-thaw cycles.

Specificity:

Claudin-9 polyclonal antibody detects endogenous levels of Claudin-9 protein.

DATA:



Western blot (WB) analysis of Claudin-9 polyclonal antibody at 1:500 dilution

Line1:Hela whole cell lysate

Line2:H9C2 whole cell lysate

Line3:Raw264.7 whole cell lysate

Note:

For research use only, not for use in diagnostic procedure.

Bioworld Technology, Inc.

Add: 1660 South Highway 100, Suite 500 St. Louis Park, MN 55416, USA.

Email: info@bioworld.com

Tel: 6123263284

Fax: 6122933841

Bioworld technology, co. Ltd.

Add: No 9, weidi road Qixia District Nanjing, 210046, P. R. China.

Email: info@biogot.com

Tel: 0086-025-68037686

Fax: 0086-025-68035151