

CISH polyclonal antibody

Catalog: BS61295

Host: Rabbit

Reactivity: Human, Mouse, Rat

BackGround:

Src homology (SH2) domains are noncatalytic sequences that are conserved among a number of cytoplasmic signaling proteins. These signaling proteins are directly regulated by receptor tyrosine kinases and control the activation of mitogenic signal transduction pathways by such receptors (1-3). For instance, ligand-induced activation of the EGF and PDGF receptors induces dimerization, triggers receptor autophosphorylation on tyrosine residues and results in the binding of a number of cytoplasmic SH2 domain proteins such as PLC-g1 (4,5), Ras GAP (6) and PI 3-kinase p85 (5) to the activated receptors (4,5). The Shc gene encodes proteins with a single SH2 domain but no identifiable catalytic domain. CIS, cytokine-inducible SH2-containing protein, is a 267 amino acid protein with a single 96 amino acid SH2 domain that associates the tyrosine-phosphorylated beta chain of the IL-3 receptor with the tyrosine-phosphorylated Epo receptor (7). CIS was initially described as an immediate early cytokine-responsive gene and appears to be a unique regulator of cytokine signaling (7).

Product:

1 mg/ml in Phosphate buffered saline (PBS) with 0.05% sodium azide, approx. pH 7.5.

Molecular Weight:

~ 29 kDa

Swiss-Prot:

Q9NSE2

Purification&Purity:

The antibody was affinity-purified from rabbit antiserum by affinity-chromatography using epitope-specific immunogen and the purity is > 95% (by SDS-PAGE).

Applications:

WB: 1:500~1:1000

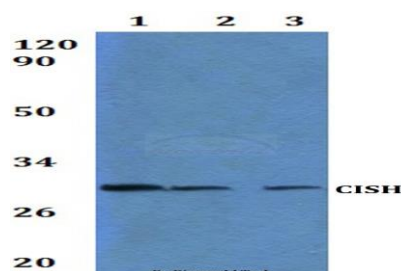
Storage&Stability:

Store at 4 °C short term. Aliquot and store at -22 °C long term. Avoid freeze-thaw cycles.

Specificity:

CISH polyclonal antibody detects endogenous levels of CISH protein.

DATA:



Western blot (WB) analysis of CISH polyclonal antibody at 1:500 dilution Lane1:HELA whole cell lysate

Lane2:RAW264.7 whole cell lysate Lane3:PC12 whole cell lysate

Note:

For research use only, not for use in diagnostic procedure.

Bioworld Technology, Inc.

Add: 1660 South Highway 100, Suite 500 St. Louis Park, MN 55416, USA.

Email: info@bioworld.com

Tel: 6123263284

Fax: 6122933841

Bioworld technology, co. Ltd.

Add: No 9, weidi road Qixia District Nanjing, 210046, P. R. China.

Email: info@biogot.com

Tel: 0086-025-68037686

Fax: 0086-025-68035151