

IGLL1 polyclonal antibody

Catalog: BS61202

Host: Rabbit

Reactivity: Human, Mouse, Rat

BackGround:

Lambda 5 (also called Immunoglobulin lambda-like polypeptide 1 or CD179b antigen) and VpreB comprise the surrogate light chain of the pre-B cell receptor complex. SL chain is also part of a quality control mechanism that tests a m-chain for its ability to pair with conventional L chains. It can form Ig-like complexes with the heavy (H) chain, the DHJHC m-protein or the p55 chain. Production of the surrogate light chain begins at the stage of pro-B cells, continues during the pre-B-cell stage and halts at the immature B cell stage. Once pre-BCR is expressed, SL chain expression is turned off. As pre-B II cells proliferate, SL is diluted out, thus limiting pre-BCR formation. Lambda 5 is critical for B cell development in mammals. Expression of Lambda 5 is highest in liver, pre-B-lymphocytes and bone marrow, the major source of B cell precursors.

Product:

1 mg/ml in Phosphate buffered saline (PBS) with 0.05% sodium azide, approx. pH 7.3.

Molecular Weight:

~ 25 kDa

Swiss-Prot:

P15814

Purification&Purity:

The antibody was affinity-purified from rabbit antiserum by affinity-chromatography using epitope-specific immunogen and the purity is > 95% (by SDS-PAGE).

Applications:

WB: 1:500~1:1000

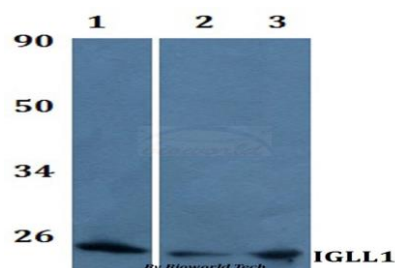
Storage&Stability:

Store at 4 °C short term. Aliquot and store at -20 °C long term. Avoid freeze-thaw cycles.

Specificity:

IGLL1 polyclonal antibody detects endogenous levels of IGLL1 protein.

DATA:



Western blot (WB) analysis of IGLL1 polyclonal antibody at 1:500 dilution

Line1:A549 whole cell lysate

Line2:PC12 whole cell lysate

Line3:sp20 whole cell lysate

Note:

For research use only, not for use in diagnostic procedure.

Bioworld Technology, Inc.

Add: 1660 South Highway 100, Suite 500 St. Louis Park, MN 55416, USA.

Email: info@bioworld.com

Tel: 6123263284

Fax: 6122933841

Bioworld technology, co. Ltd.

Add: No 9, weidi road Qixia District Nanjing, 210046, P. R. China.

Email: info@biogot.com

Tel: 0086-025-68037686

Fax: 0086-025-68035151