

AGBL3 polyclonal antibody

Catalog: BS61169

Host: Rabbit

Reactivity: Human

BackGround:

Cytosolic carboxypeptidase 3, Metalloprotease that mediates both deglutamylation and deaspartylation of target proteins. Catalyzes the deglutamylation of polyglutamate side chains generated by post-translational polyglutamylation in proteins such as tubulins. Also removes gene-encoded polyglutamates or polyaspartates from the carboxy-terminus of target proteins such as MYLK. Does not show dephosphorylation or deglycosylation activities from the carboxy-terminus of tubulin.

Product:

Rabbit IgG, 1mg/ml in PBS with 0.02% sodium azide, 50% glycerol, pH7.2.

Molecular Weight:

~ 116 kDa

Swiss-Prot:

Q8NEM8

Purification&Purity:

The antibody was affinity-purified from rabbit antiserum by affinity-chromatography using epitope-specific immunogen and the purity is > 95% (by SDS-PAGE).

Applications:

WB: 1:500~1:1000

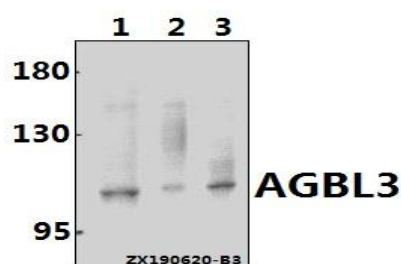
Storage&Stability:

Store at 4 °C short term. Aliquot and store at -20 °C long term. Avoid freeze-thaw cycles.

Specificity:

AGBL3 polyclonal antibody detects endogenous levels of AGBL3 protein.

DATA:



Western blot (WB) analysis of AGBL3 polyclonal antibody at 1:500 dilution

Lane1:PC3 whole cell lysate(40ug)

Lane2:SK-OVCAR3 whole cell lysate(40ug)

Lane3:A2780 whole cell lysate(40ug)

Note:

For research use only, not for use in diagnostic procedure.

Bioworld Technology, Inc.

Add: 1660 South Highway 100, Suite 500 St. Louis Park, MN 55416, USA.

Email: info@bioworld.com

Tel: 6123263284

Fax: 6122933841

Bioworld technology, co. Ltd.

Add: No 9, weidi road Qixia District Nanjing, 210046, P. R. China.

Email: info@biogot.com

Tel: 0086-025-68037686

Fax: 0086-025-68035151