

DDX24 polyclonal antibody

Catalog: BS61138

Host: Rabbit

Reactivity: Human, Mouse, Rat

BackGround:

DEAD-box proteins, characterized by the conserved motif Asp-Glu-Ala-Asp, are putative RNA helicases implicated in several cellular processes involving modifications of RNA secondary structure and ribosome/spliceosome assembly. Based on their distribution patterns, some members of this family may be involved in embryogenesis, spermatogenesis and cellular growth and division. DDX24 (DEAD (Asp-Glu-Ala-Asp) box polypeptide 24) is an 859 amino acid protein that contains one helicase C-terminal domain and one helicase ATP-binding domain. Expressed ubiquitously with highest levels in brain and heart, DDX24 functions as an ATP-dependent RNA helicase that is subject to DNA damage-dependent phosphorylation. Human DDX24 shares 79% sequence similarity with its mouse counterpart, suggesting a conserved role between species.

Product:

1 mg/ml in Phosphate buffered saline (PBS) with 0.05% sodium azide, approx. pH 7.3.

Molecular Weight:

~ 90 kDa

Swiss-Prot:

Q9GZR7

Purification&Purity:

The antibody was affinity-purified from rabbit antiserum by affinity-chromatography using epitope-specific immunogen and the purity is > 95% (by SDS-PAGE).

Applications:

WB: 1:500~1:1000

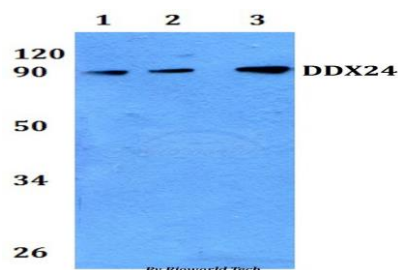
Storage&Stability:

Store at 4 °C short term. Aliquot and store at -20 °C long term. Avoid freeze-thaw cycles.

Specificity:

DDX24 polyclonal antibody detects endogenous levels of DDX24 protein.

DATA:



Western blot (WB) analysis of DDX24 polyclonal antibody at 1:500 dilution

Line1:A549 whole cell lysate

Line2:PC12 whole cell lysate

Line3:sp20 whole cell lysate

Note:

For research use only, not for use in diagnostic procedure.

Bioworld Technology, Inc.

Add: 1660 South Highway 100, Suite 500 St. Louis Park, MN 55416, USA.

Email: info@bioworld.com

Tel: 6123263284

Fax: 6122933841

Bioworld technology, co. Ltd.

Add: No 9, weidi road Qixia District Nanjing, 210046, P. R. China.

Email: info@biogot.com

Tel: 0086-025-68037686

Fax: 0086-025-68035151