

APOL3 polyclonal antibody

Catalog: BS61133

Host: Rabbit

Reactivity: Human, Mouse, Rat

BackGround:

Apolipoproteins are protein components of plasma lipoproteins. The apolipoprotein L gene family encodes six highly homologous proteins designated apoL1-6, which are associated with large high density type lipoproteins (HDL). The human apoL family maps to chromosome 22q12.1-13.1 within a 127,000 bp region. apoL2 and apoL3 may allow the binding of lipids to organelles or may be involved in the movement of lipids in the cytoplasm. apoL2 localizes to the cytoplasm and is widely expressed, with the highest levels observed in the lung, thymus, pancreas, placenta, adult brain and prostate. The apoL2 protein is also detected in the spleen, liver, kidney, colon, small intestine, uterus, spinal cord, adrenal gland, salivary gland, trachea, mammary gland, skeletal muscle, testis and fetal brain and liver. apoL3 also localizes to the cytoplasm and is widely expressed, with highest levels detected in the prostate, lung and placenta. It is also detected in kidney, bone marrow, spleen, thymus, spinal cord, adrenal gland, salivary gland, trachea and mammary gland. Lower levels of apoL3 are observed in the brain, heart, fetal liver, pancreas and testis.

Product:

1 mg/ml in Phosphate buffered saline (PBS) with 0.05% sodium azide, approx. pH 7.3.

Molecular Weight:

~ 36, 44kDa

Swiss-Prot:

O95236

Purification&Purity:

The antibody was affinity-purified from rabbit antiserum by affinity-chromatography using epitope-specific immunogen and the purity is > 95% (by SDS-PAGE).

Applications:

WB: 1:500~1:1000

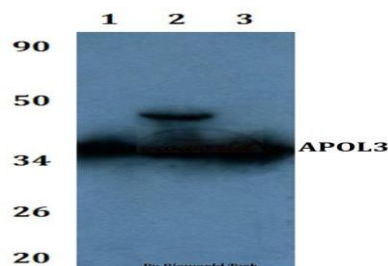
Storage&Stability:

Store at 4 °C short term. Aliquot and store at -20 °C long term. Avoid freeze-thaw cycles.

Specificity:

APOL3 polyclonal antibody detects endogenous levels of APOL3 protein.

DATA:



Western blot (WB) analysis of APOL3 polyclonal antibody at 1:500 dilution

Line1:A549 whole cell lysate

Line2:PC12 whole cell lysate

Line3:sp20 whole cell lysate

Note:

For research use only, not for use in diagnostic procedure.

Bioworld Technology, Inc.

Add: 1660 South Highway 100, Suite 500 St. Louis Park, MN 55416, USA.

Email: info@bioworld.com

Tel: 6123263284

Fax: 6122933841

Bioworld technology, co. Ltd.

Add: No 9, weidi road Qixia District Nanjing, 210046, P. R. China.

Email: info@biogot.com

Tel: 0086-025-68037686

Fax: 0086-025-68035151