

ADAMTS16 polyclonal antibody

Catalog: BS61125

Host: Rabbit

Reactivity: Human,Rat,Mouse

BackGround:

ADAMTS16 is a member of the ADAMs family of proteinases with 4 thrombospondin-like domains. ADAMTS16 is closest in homology to ADAMTS18, sharing 57% overall identity. ADAMTS16 is expressed in fetal human lung and kidney, and in adult brain and ovary as well as in osteoarthritic cartilage, prostate and breast tissue.

Product:

Rabbit IgG, 1mg/ml in PBS with 0.02% sodium azide, 50% glycerol, pH7.2.

Molecular Weight:

~ 136 kDa

Swiss-Prot:

Q8TE57

Purification&Purity:

The antibody was affinity-purified from rabbit antiserum by affinity-chromatography using epitope-specific immunogen and the purity is > 95% (by SDS-PAGE).

Applications:

WB: 1:1000~1:5000

Storage&Stability:

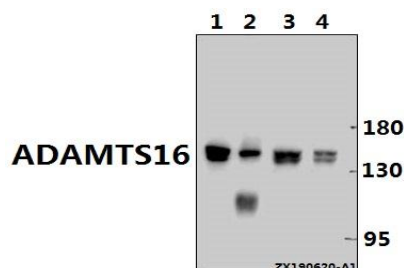
Store at 4 °C short term. Aliquot and store at -20 °C long

term. Avoid freeze-thaw cycles.

Specificity:

ADAMTS16 polyclonal antibody detects endogenous levels of ADAMTS16 protein.

DATA:



Western blot (WB) analysis of ADAMTS16 polyclonal antibody at 1:2000 dilution

Lane1:CT26 whole cell lysate(40ug)

Lane2:The Prostate tissue lysate of Rat(40ug)

Lane3:PC3 whole cell lysate(40ug)

Lane4:SK-OVCAR3 whole cell lysate(40ug)

Note:

For research use only, not for use in diagnostic procedure.

Bioworld Technology, Inc.

Add: 1660 South Highway 100, Suite 500 St. Louis Park, MN 55416, USA.

Email: info@bioworld.com

Tel: 6123263284

Fax: 6122933841

Bioworld technology, co. Ltd.

Add: No 9, weidi road Qixia District Nanjing, 210046, P. R. China.

Email: info@biogol.com

Tel: 0086-025-68037686

Fax: 0086-025-68035151